

Agilent Innovative Solutions for Testing *Bluetooth*® Enhanced Data Rate Products

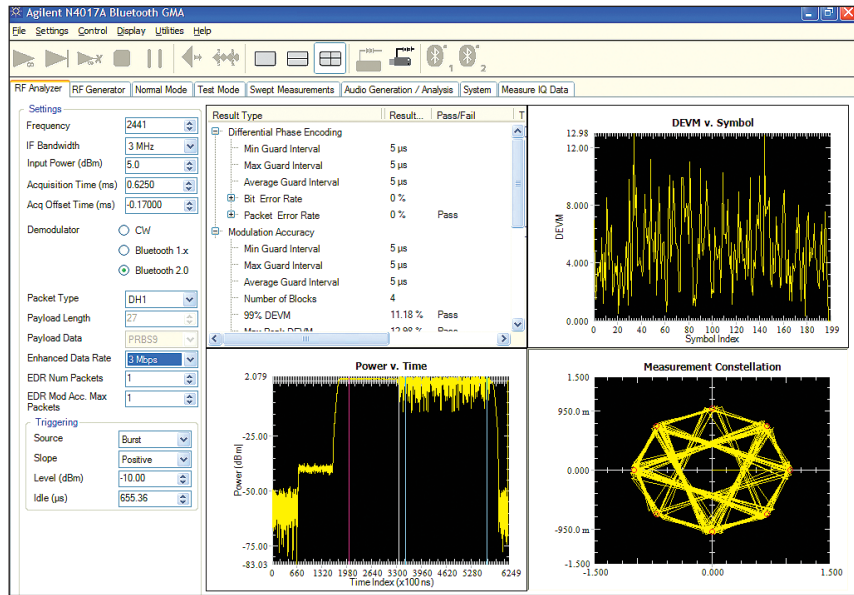
Delivering the flexibility to affordably test *Bluetooth* wireless connectivity

Streamline integration, improve RF performance, obtain faster, more accurate measurements, and minimize capital expenditures for test equipment – it’s all possible with *Bluetooth* Enhanced Data Rate (EDR) solutions from Agilent.

The latest version of *Bluetooth* – *Bluetooth* EDR – supports data rates of up to 3 Mbps and remains backward-compatible with the original *Bluetooth* specification. Its two new modulation schemes allow multiple applications to utilize available bandwidth more effectively and achieve higher overall performance. The *Bluetooth* RF test specification, version 1.2/2.0/2.0+EDR [vol2], was developed by the *Bluetooth* SIG in order to provide a set of conformance tests for the air interface, as well as to ensure interoperability among *Bluetooth* devices.

The industry’s first one-box test solution for *Bluetooth* EDR Tx/Rx testing now supports EDR test mode

To ensure *Bluetooth* EDR devices adhere to the *Bluetooth* v2.0+EDR standard, the N4010A test set with Option 107 has six of the eight EDR test cases built-in, for fast, accurate loopback testing of *Bluetooth* EDR chipsets, modules, and devices.



The N4010A-107 *Bluetooth* EDR link plus measurements make it easy to test *Bluetooth* EDR connectivity during development, integration, and manufacturing. Adding Option 107 to your existing N4010A test set lets you maximize your testing capabilities, while minimizing test equipment expenditures.

To provide a graphical user interface and PC control for the N4010A-107, use the N4017A Option 205 *Bluetooth* graphical measurement software application. Option 205 provides graphical views, including IQ constellation and detailed numerical results, making it an ideal development tool for R&D engineers and a well-designed debug tool for manufacturing test.

The N4010A test set is also flexible enough to provide a single, integrated platform for testing *Bluetooth* 1.2, WLAN 802.11a/ b/g, and ZigBee™ wireless connectivity devices.

Bluetooth EDR features

- *Bluetooth* EDR loopback and transmitter test mode support
- Six of the eight EDR test cases built-in
- Transmitter measurements
 - Carrier frequency stability and modulation accuracy (DEVM)
 - Relative Tx power
 - Differential phase encoding
 - Guard interval
- Receiver measurements
 - EDR sensitivity
 - EDR BER floor performance
 - EDR maximum input level

Order information

Model number	Description
N4010A	Wireless Connectivity Test Set
N4010A-101	<i>Bluetooth</i> test
N4010A-110 ¹	Additional input/output connectivity (required for N4017A operation)
N4010A-107	<i>Bluetooth</i> EDR link plus measurements
N4017A	<i>Bluetooth</i> Graphical Measurement Application
N4017A-205	<i>Bluetooth</i> EDR

Optional products	Description
N4010A-113	<i>Bluetooth</i> audio generation and analysis
N4010A-112	<i>Bluetooth</i> headset profile

Related literature

N4010A Wireless Connectivity Test Set, Brochure, 5989-4150EN
N4010A Wireless Connectivity Test Set, Data Sheet, 5989-4035EN
N4010A Wireless Connectivity Test Set, Configuration Guide, 5989-3486EN
N4017A Bluetooth Graphical Measurement Application, Product Overview, 5988-2771EN
Bluetooth Enhanced Data Rate (EDR): The Wireless Evolution, Application Note, 5989-4204EN

For more information

Learn more about the N4010A test set at www.agilent.com/find/n4010a

For details on the N4017 *Bluetooth* graphic measurement application visit www.agilent.com/find/n4017a

Option 110 (additional input/output connectivity) provided as standard on N4010A orders received after March 1, 2006.

Bluetooth and the *Bluetooth* logo are registered trademarks owned by *Bluetooth* SIG, Inc. U.S.A. and licensed to Agilent Technologies, Inc.

ZigBee is a trademark of The ZigBee Alliance.



www.agilent.com/find/quick
Quickly choose and use your test equipment solutions with confidence.



www.agilent.com/find/open
Agilent Open simplifies the process of connecting and programming test systems to help engineers design, validate and manufacture electronic products. Agilent offers open connectivity for a broad range of system-ready instruments, open industry software, PC-standard I/O and global support, which are combined to more easily integrate test system development.

Remove all doubt

Our repair and calibration services will get your equipment back to you, performing like new, when promised. You will get full value out of your Agilent equipment throughout its lifetime. Your equipment will be serviced by Agilent-trained technicians using the latest factory calibration procedures, automated repair diagnostics and genuine parts. You will always have the utmost confidence in your measurements.

Agilent offers a wide range of additional expert test and measurement services for your equipment, including initial start-up assistance onsite education and training, as well as design, system integration, and project management.

For more information on repair and calibration services, go to

www.agilent.com/find/removealldoubt

For more information on Agilent Technologies' products, applications or services, please contact your local Agilent office.

Phone or Fax

United States: (tel) 800 829 4444 (fax) 800 829 4433	Korea: (tel) (080) 769 0800 (fax) (080)769 0900
Canada: (tel) 877 894 4414 (fax) 800 746 4866	Latin America: (tel) (305) 269 7500
China: (tel) 800 810 0189 (fax) 800 820 2816	Taiwan: (tel) 0800 047 866 (fax) 0800 286 331
Europe: (tel) 31 20 547 2111	Other Asia Pacific Countries: (tel) (65) 6375 8100 (fax) (65) 6755 0042
Japan: (tel) (81) 426 56 7832 (fax) (81) 426 56 7840	Email: tm_ap@agilent.com

Contacts revised: 05/05/05

The complete list is available at:
www.agilent.com/find/contactus

Product specifications and descriptions in this document subject to change without notice.

© Agilent Technologies, Inc. 2006, 2005
Printed in USA, August 18, 2006
5989-3055EN