

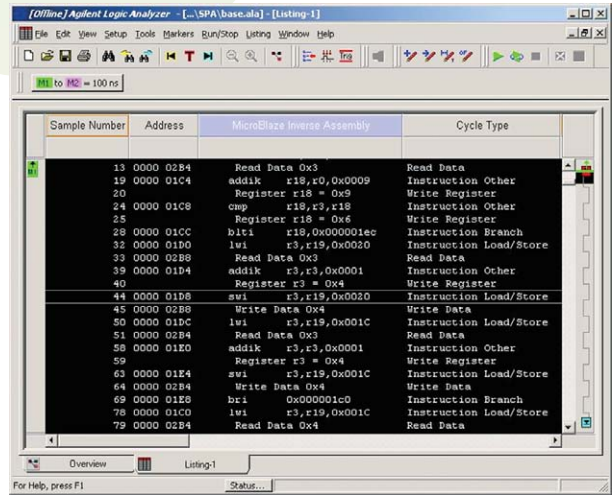
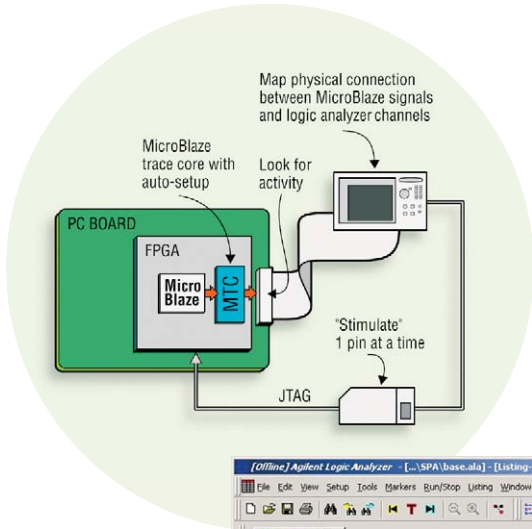
E9524A MicroBlaze Trace Toolset

Easily trace MicroBlaze software execution with Agilent's MicroBlaze trace core and inverse assembler

Agilent Technologies and Xilinx have developed a logic analyzer trace solution for Xilinx's MicroBlaze embedded processor that overcomes the traditional difficulties of tracing software execution. Combining the capabilities of a MicroBlaze inverse assembler with a specialized trace core simplifies measurement setup and reduces the number of pins required. In addition, the trace core overcomes the lack of visibility you encounter when you employ cache and pipelining, and unlocks the power of the logic analyzer to make accurate measurements. You get easy access to the insight you need to increase the quality of your design and ensure its timely completion.

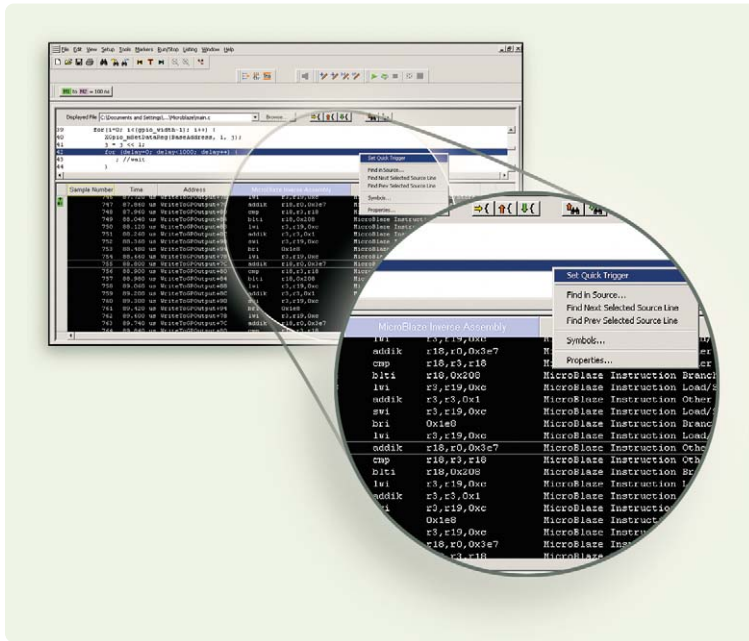
A brief summary of features:

- Capture real-time instruction-side and/or data-side code flow from one or more MicroBlaze cores
- Time-correlate this activity with logic analyzer measurements from the surrounding system
- Display processor execution in assembly instruction mnemonics and correlate the instructions to high-level source code
- Employ the powerful triggering and deep memory trace of the Agilent logic analyzer
- Automated measurement setup with Xilinx EDK tools and Agilent's MicroBlaze Trace Core reduces setup time from hours to a few minutes



Agilent's MicroBlaze Trace Toolset uses a very small trace core inserted in your FPGA design to simplify probing the trace signals for the MicroBlaze core. This core works in conjunction with software on your Agilent logic analyzer to provide inverse assembly and correlation with your source code – a powerful addition to your debug environment.

For more information, please visit www.agilent.com/find/microblaze or contact your local Agilent Technologies sales representative.



Agilent logic analyzers come standard with a source correlation window that provides correlation between assembly mnemonics and high-level source code. One-click trigger specification simplifies triggering on a specific line in the source code.

Agilent Open

www.agilent.com/find/open

Agilent Open simplifies the process of connecting and programming test systems to help engineers design, validate and manufacture electronic products. Agilent offers open connectivity for a broad range of system-ready instruments, open industry software, PC-standard I/O and global support, which are combined to more easily integrate test system development.

Agilent Email Updates

www.agilent.com/find/emailupdates

Get the latest information on the products and applications you select.

Agilent Direct

www.agilent.com/find/agilentdirect

Quickly choose and use your test equipment solutions with confidence.

www.agilent.com/find/microblaze

For more information on Agilent Technologies' products, applications or services, please contact your local Agilent office. The complete list is available at:

www.agilent.com/find/contactus

**Phone or Fax
United States:**
(tel) 800 829 4444
(fax) 800 829 4433

Canada:
(tel) 877 894 4414
(fax) 800 746 4866

China:
(tel) 800 810 0189
(fax) 800 820 2816

Europe:
(tel) 31 20 547 2111

Japan:
(tel) (81) 426 56 7832
(fax) (81) 426 56 7840

Korea:
(tel) (080) 769 0800
(fax) (080) 769 0900

Latin America:
(tel) (305) 269 7500

Taiwan:
(tel) 0800 047 866
(fax) 0800 286 331

Other Asia Pacific Countries:
(tel) (65) 6375 8100
(fax) (65) 6755 0042
Email: tm_ap@agilent.com

Contacts revised: 05/27/05

Product specifications and descriptions in this document subject to change without notice.

© Agilent Technologies, Inc. 2006
Printed in USA, June 27, 2006
5989-5390EN