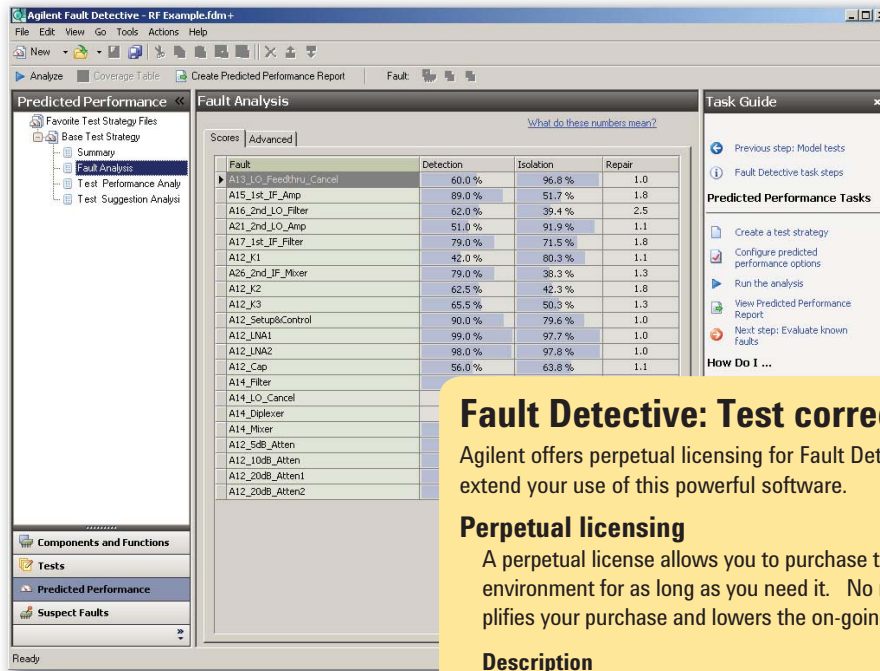


Fault Detective Pricing Guide



Fault Detective: Test correctly, Diagnose easily.

Agilent offers perpetual licensing for Fault Detective NEW with version 4.7. Simplify and extend your use of this powerful software.

Perpetual licensing

A perpetual license allows you to purchase the latest version of software and use it in your environment for as long as you need it. No maintenance costs are necessary which simplifies your purchase and lowers the on-going costs.

Description	Product number	Price
Node-locked development license	W1160C-PD1	\$26,000
Server-based development license	W1160C-PC1	\$49,400
Node-locked runtime license	W1160C-PR1	\$5,200
Server-based runtime license	W1160C-PRS	Custom Quote

Start Up Assistance, Consulting, and Support

Take advantage of Agilent's knowledge and experience to learn how to optimize Fault Detective and maximize your savings. Get the consulting and support you want customized to your needs.

Description	Product number	Price
Fault Detective Consulting	PS-X10-500	Custom Quote



Try Fault Detective for 30 days at no cost

For a limited time, we'll provide qualified new customers with a 30-day Fault Detective software license at no cost or risk. We'll even assign a specialist to set up Fault Detective for one of your key products, also at no cost.

To sign up for a 30-day risk free trial, visit us online at www.agilent.com/find/fd



Agilent Email Updates

www.agilent.com/find/emailupdates
Get the latest information on the products and applications you select.



www.lxistandard.org LXI is the LAN-based successor to GPIB, providing faster, more efficient connectivity. Agilent is a founding member of the LXI consortium.

Agilent Channel Partners

www.agilent.com/find/channelpartners
Get the best of both worlds: Agilent's measurement expertise and product breadth, combined with channel partner convenience.

Remove all doubt

Our repair and calibration services will get your equipment back to you, performing like new, when promised. You will get full value out of your Agilent equipment throughout its lifetime. Your equipment will be serviced by Agilent-trained technicians using the latest factory calibration procedures, automated repair diagnostics and genuine parts. You will always have the utmost confidence in your measurements.

Agilent offers a wide range of additional expert test and measurement services for your equipment, including initial start-up assistance onsite education and training, as well as design, system integration, and project management.

For more information on repair and calibration services, go to

www.agilent.com/find/removealldoubt

www.agilent.com

For more information on Agilent Technologies' products, applications or services, please contact your local Agilent office. The complete list is available at:

www.agilent.com/find/contactus

Americas

Canada	(877) 894-4414
Latin America	305 269 7500
United States	(800) 829-4444

Asia Pacific

Australia	1 800 629 485
China	800 810 0189
Hong Kong	800 938 693
India	1 800 112 929
Japan	0120 (421) 345
Korea	080 769 0800
Malaysia	1 800 888 848
Singapore	1 800 375 8100
Taiwan	0800 047 866
Thailand	1 800 226 008

Europe & Middle East

Austria	01 36027 71571
Belgium	32 (0) 2 404 93 40
Denmark	45 70 13 15 15
Finland	358 (0) 10 855 2100
France	0825 010 700*
	*0.125 €/minute
Germany	07031 464 6333
Ireland	1890 924 204
Israel	972-3-9288-504/544
Italy	39 02 92 60 8484
Netherlands	31 (0) 20 547 2111
Spain	34 (91) 631 3300
Sweden	0200-88 22 55
Switzerland	0800 80 53 53
United Kingdom	44 (0) 118 9276201

Other European Countries:

www.agilent.com/find/contactus

Revised: October 1, 2008

Certain products may be subject to localization adjustments. Product specifications and descriptions in this document subject to change without notice.

© Agilent Technologies, Inc. 2010
Printed in USA, April 29, 2010
5989-5796EN



Agilent Technologies