

Quick Start  
Guide

Keysight  
89600  
Software

# Notices

## Copyright Notice

© Keysight Technologies 2016

No part of this manual may be reproduced in any form or by any means (including electronic storage and retrieval or translation into a foreign language) without prior agreement and written consent from Keysight Technologies, Inc. as governed by United States and international copyright laws.

## Manual Part Number

89600-90273

## Published By

Keysight Technologies, Inc.  
1400 Fountaingrove Parkway  
Santa Rosa, CA 95403

## Edition

April 2016

Printed in USA/Malaysia

## Regulatory Compliance

This product has been designed and tested in accordance with accepted industry standards, and has been supplied in a safe condition.

## Warranty

THE MATERIAL CONTAINED IN THIS DOCUMENT IS PROVIDED "AS IS," AND IS SUBJECT TO BEING CHANGED, WITHOUT NOTICE, IN FUTURE EDITIONS. FURTHER, TO THE MAXIMUM EXTENT PERMITTED BY APPLICABLE LAW, KEYSIGHT DISCLAIMS ALL WARRANTIES, EITHER EXPRESS OR IMPLIED, WITH REGARD TO THIS MANUAL AND ANY INFORMATION CONTAINED HEREIN, INCLUDING BUT NOT LIMITED TO THE IMPLIED WARRANTIES OF MERCHANTABILITY AND FITNESS FOR A PARTICULAR PURPOSE. KEYSIGHT SHALL NOT BE LIABLE FOR ERRORS OR FOR INCIDENTAL OR CONSEQUENTIAL DAMAGES IN CONNECTION WITH THE FURNISHING, USE, OR PERFORMANCE OF THIS DOCUMENT OR OF ANY INFORMATION CONTAINED

HEREIN. SHOULD KEYSIGHT AND THE USER HAVE A SEPARATE WRITTEN AGREEMENT WITH WARRANTY TERMS COVERING THE MATERIAL IN THIS DOCUMENT THAT CONFLICT WITH THESE TERMS, THE WARRANTY TERMS IN THE SEPARATE AGREEMENT SHALL CONTROL.

KEYSIGHT TECHNOLOGIES DOES NOT WARRANT THIRD-PARTY SYSTEM-LEVEL (COMBINATION OF CHASSIS, CONTROLLERS, MODULES, ETC.) PERFORMANCE, SAFETY, OR REGULATORY COMPLIANCE, UNLESS SPECIFICALLY STATED.

## Technology Licenses

The hardware and/or software described in this document are furnished under a license and may be used or copied only in accordance with the terms of such license.

## U.S. Government Rights

The Software is "commercial computer software," as defined by Federal Acquisition Regulation ("FAR") 2.101. Pursuant to FAR 12.212 and 27.405-3 and Department of Defense FAR Supplement ("DFARS") 227.7202, the U.S. government acquires commercial computer software under the same terms by which the software is customarily provided to the public. Accordingly, Keysight provides the Software to U.S. government customers under its standard commercial license, which is embodied in its End User License Agreement (EULA), a copy of which can be found at <http://www.keysight.com/find/sweula>. The license set forth in the EULA represents the exclusive authority by which the U.S. government may use, modify, distribute, or disclose the Software. The EULA and the license set forth therein, does not require or permit, among other things, that Keysight: (1) Furnish technical information related to commercial computer software or commercial computer software documentation that is not customarily provided to the public; or (2) Relinquish to, or otherwise provide, the government rights in excess of these rights customarily provided to the

public to use, modify, reproduce, release, perform, display, or disclose commercial computer software or commercial computer software documentation. No additional government requirements beyond those set forth in the EULA shall apply, except to the extent that those terms, rights, or licenses are explicitly required from all providers of commercial computer software pursuant to the FAR and the DFARS and are set forth specifically in writing elsewhere in the EULA. Keysight shall be under no obligation to update, revise or otherwise modify the Software. With respect to any technical data as defined by FAR 2.101, pursuant to FAR 12.211 and 27.404.2 and DFARS 227.7102, the U.S. government acquires no greater than Limited Rights as defined in FAR 27.401 or DFAR 227.7103-5 (c), as applicable in any technical data.

## Safety Notices

### CAUTION

A CAUTION notice denotes a hazard. It calls attention to an operating procedure, practice, or the like that, if not correctly performed or adhered to, could result in damage to the product or loss of important data. Do not proceed beyond a CAUTION notice until the indicated conditions are fully understood and met.

### WARNING

A WARNING notice denotes a hazard. It calls attention to an operating procedure, practice, or the like that, if not correctly performed or adhered to, could result in personal injury or death. Do not proceed beyond a WARNING notice until the indicated conditions are fully understood and met.

## In This Book

This guide documents how to install the Keysight 89600 software and a transportable license. It also documents how to view the software's online help and demo signal packages.

## Other Documentation

In addition to the Quick Start Guide (this book), the following documentation is included with your software:

- The *89600 Software Installation Guide* (InstallationGuide.pdf) is available on the installation DVD in the **manuals** folder, during installation by clicking **More Installation Choices > View Installation Guide**, or after you install the software in **C:\Program Files\Agilent\89600 Software xx.y\89600 VSA Software\Help** (where xx.y is the VSA version number).
- The 89600 Online Help is available after you install the software on your computer. The help provides use and operation information.
- The complete documentation (PDF files) for the Keysight IO libraries is located in **C:\Program Files\Agilent\IO Libraries Suite\Manuals** (if you install the IO libraries).
- Technical Specifications are available from the 89600 web page:  
<http://www.keysight.com/find/89600>

### NOTE

To read the PDF files, you must have Acrobat Reader installed on your computer. To install the latest Acrobat Reader, go to:

<http://get.adobe.com/reader/>

---



# Contents

---

<b>In This Book</b> .....	<b>3</b>
Other Documentation .....	3
<b>Overview</b> .....	<b>7</b>
89600 Software .....	7
Licensing .....	8
Keysight 89600 Software Operating Configurations .....	8
Installation and Configuration Process .....	9
<b>Configuring Remote PC</b> .....	<b>11</b>
Configuration Steps .....	12
<b>Installing 89600 Software</b> .....	<b>15</b>
Installing 89600 Software in a PC .....	16
Installing .NET Framework 3.5 on Windows 8 PCs .....	18
Installing 89600 Software in a Keysight X-Series Signal Analyzer .....	19
Installing 89600 Software in a Keysight Infiniium Scope .....	21
Installing 89600 Software in a Keysight Logic Analyzer .....	23
<b>Installing Licenses</b> .....	<b>25</b>
Transportable License .....	26
Redeeming a transportable license .....	26
Installing a transportable license .....	27
<b>Using the VSA Online Help and Demos</b> .....	<b>29</b>
Accessing Help .....	30
Help menu .....	30
Dynamic help .....	31
Help button on dialogs .....	31
F1 on the keyboard .....	31
Recalling a Demo Signal Package .....	33



# Overview

The Keysight 89600 Quick Start Guide provides all necessary instructions to install the Keysight 89600 software and a transportable license

## 89600 Software

The Keysight 89600 software includes two applications: the Keysight 89600 VSA *Vector Signal Analysis* software and the Keysight 89600 WLA *Wireless Link Analysis* software. The software InstallShield Wizard guides you through the installation process for both applications.

## Licensing

There are four types of licenses:

- **Demo:** The Demo license is provided with the 89600 software installation and enables you to use the 89600 software with limited functionality.
- **Trial:** The Trial license lets you immediately start using a fully licensed 89600 software application for a temporary trial period. When the trial period expires, you will need to purchase a valid license for continued use.
- **Transportable:** The Transportable license is used to license the Keysight 89600 software plus options to only run on the host PC. However, you do have the capability to transport the license to a different PC, making it the new host PC.
- **Floating:** The Floating or Network license provides the ability for different PC's to use a license that is stored on a network PC (or server).

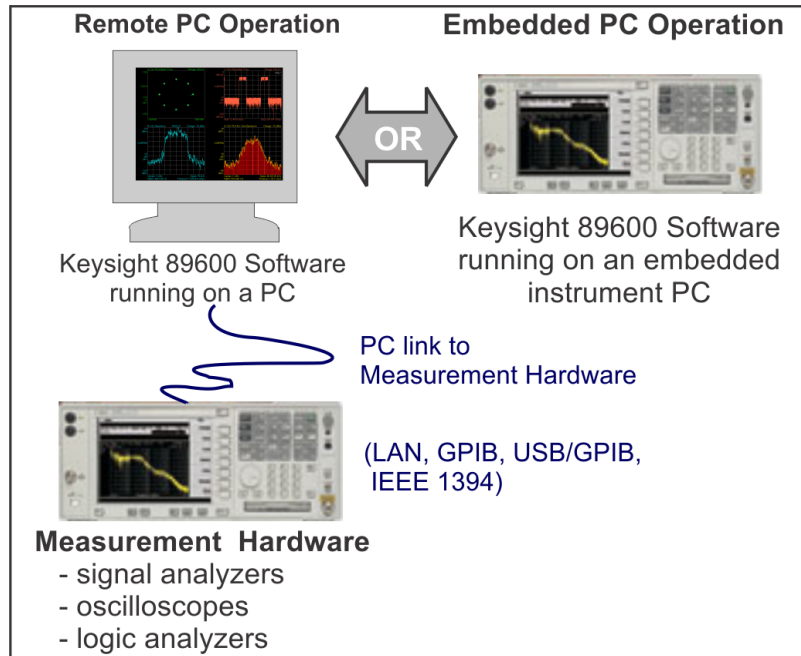
This Quick Start Guide documents how to install the transportable license. For information on how to install the demo, trial, or floating license types, see the Installation Guide (InstallationGuide.pdf) available on the installation DVD in the `manuals` folder, during installation by clicking **More Installation Choices > View Installation Guide**, or after you install the software in **C:\Program Files\Agilent\89600 Software xx.y\89600 VSA Software\Help** (where `xx.y` is the VSA version number).

## Keysight 89600 Software Operating Configurations

The Host PC is the computer that will run the Keysight 89600 software. There are two 89600 software operating configurations: Remote PC Operation and Embedded PC Operation (also referred to as Embedded Instrument Operation). In a Remote PC Operation, the software runs on a standalone host PC linked to the measurement hardware via the I/O interface, such as LAN, GPIB, USB, and IEEE 1394.



In an Embedded PC Operation, the 89600 software runs on a PC embedded in the measurement hardware platform such as the Keysight X-Series Analyzer, Keysight Infiniium Scope, and Keysight Logic Analyzer.



## Installation and Configuration Process

The Keysight 89600 software installation process includes the following primary steps:

1. **Set up and configure the remote PC.**

**NOTE**

Skip this step if you are installing the software in an embedded PC operation.

---

Go to Chapter 2 [Configuring Remote PC \(page 11\)](#) to setup and configure the remote PC hardware including:

2. **Install the 89600 software.**

Go to Chapter 3 [Installing 89600 Software \(page 15\)](#) and follow the instructions to install the Keysight 89600 software.

3. **License the Keysight 89600 software.**

Go to Chapter 4 [Installing Licenses \(page 25\)](#) and follow the instructions to license the Keysight 89600 software and option.



## Configuring Remote PC

This chapter only applies to the remote PC operation configuration. This contains information to setup and configure the PC including system requirements, I/O interface requirements, and the PC interface installation and setup procedure.

**NOTE**

If you are going to install the software in an embedded PC operation, skip this chapter and go directly to [Installing 89600 Software \(page 15\)](#).

---

## Configuration Steps

1. Verify your PC meets the system requirements listed in the following table.

Characteristic	Requirement
Operating system	Microsoft Windows 7 Professional, Enterprise, or Ultimate (32 bit or 64 bit) Microsoft Windows 8 Professional or Enterprise (32 bit or 64 bit)
CPU	1 GHz (>2 GHz recommended)
RAM	2 GB (4 GB recommended)
Video RAM	128 MB (512 MB recommended)
Hard disk	1 GB available
Additional drives	DVD to load the software; license transfer requires network access or a USB memory device
Interface support	LAN, GPIB, USB
Browser	Internet Explorer Version 9.0 or higher required for full context-sensitive help functionality.

2. Verify that your PC's I/O interface meets the requirements listed in the following table.

**NOTE** If you are only using simulated measurement hardware or signal simulation software, you do not need to install/configure an I/O interface. You can skip the remainder of this chapter and go directly to [Installing 89600 Software in a PC \(page 16\)](#).

Using the following table, determine what type of PC and I/O interface is required for your measurement hardware. Note that you may need to install and configure more than one interface.

- If the PC already supports the I/O interface, skip the remainder of this chapter and install the 89600 VSA software—go to [Installing 89600 Software in a PC \(page 16\)](#).
- If the PC supports the I/O interface but it is not currently installed, you will need to install and configure the I/O interface hardware on the PC—go to [Installing I/O Interface Hardware \(page 14\)](#).
- If the PC does not support the I/O interface, you can not use the 89600 VSA software with your measurement hardware.

Measurement Hardware	Computer Type	Interface
Keysight ESA	Laptop or desktop PC	GPIB, or USB/GPIB adapter
Keysight ESA-E Series Analyzer	Laptop or desktop PC	GPIB or USB/GPIB
Keysight InfiniiVision 6000/7000 Series Oscilloscope	Laptop or desktop PC	LAN, GPIB, or USB/GPIB
Keysight Infiniium Oscilloscope	Laptop or desktop PC or embedded Windows 7 scope	LAN, GPIB, USB/GPIB, or internal
Keysight Logic Analyzer	Laptop, desktop PC, or embedded PC	LAN, IEEE-1394 (only for 1690 Series), or internal
Keysight X-Series Signal Analyzer	Laptop, desktop PC, or embedded PC	LAN or internal**
Keysight N4010 Wireless Connectivity Test Set	Laptop or desktop PC	USB, LAN, GPIB, or USB/GPIB
Keysight PSA (used as ADC)*	Laptop or desktop PC	LAN, GPIB, USB, or USB/GPIB*
Keysight N7100 Series Multi-Channel Signal Analysis System (N7109A)	Laptop or desktop PC	LAN

\* To use GPIB with the PSA, your PSA firmware must be version A.4.0 or later. With earlier firmware versions, you must use the LAN connection.

\*\* The Keysight X-Series Signal Analyzer embedded PC operation only supports a LAN interface between the analyzer and a Keysight Source.

## 7. Installing I/O Interface Hardware

- a. Install I/O Interface Card(s) in the PC.

Install all necessary I/O interface card(s) in the PC per the instructions that came with the I/O interface card vendor documentation.

**National Instruments GPIB card:** For a National Instruments GPIB card, be sure to install the NI 488.2 software first, then reboot your PC and install the interface card.

**NOTE**

**Exclude Multiple GPIB Devices:** If this PC controls other GPIB measurement hardware or devices, you need to exclude those devices from the 89600 identification process.

---

- b. Configure the PC I/O Interface.

Configure the I/O interface card(s) in the PC per the instructions that came with the I/O interface card vendor documentation.

**TIP**

You can typically use the default I/O interface hardware settings.

---

**NOTE**

**GPIB:** For GPIB interfaces, make sure that each measurement hardware has a unique GPIB address—multiple GPIB devices cannot use the same GPIB address.

---

**NOTE**

If the PC and measurement hardware are connected to a local internal LAN, you may need to check with your network administrator to verify that the IP addresses for the PC and measurement hardware satisfy requirements.

---

- c. Cycle power OFF/ON on all system hardware.

After completing the hardware I/O connections, cycle the power OFF/ON on the PC and all connected measurement hardware.

- d. Next install the 89600 VSA software. Go to [Installing 89600 Software in a PC \(page 16\)](#).

# Installing 89600 Software

This procedure installs the 89600 VSA and WLA software.

There are different installation procedures for each operating configuration—Remote PC and Embedded PC configuration. Remote PC configuration requires installing the software in a PC. Embedded PC configuration requires installing the software in the measurement hardware; there are also different install procedures for different measurement hardware types.

Select and use the software installation procedure for your particular installation:

## Remote PC Configuration

- [Installing 89600 Software in a PC \(page 16\)](#)

## Embedded PC Configuration

- [Installing 89600 Software in a Keysight X-Series Signal Analyzer \(page 19\)](#)
- [Installing 89600 Software in a Keysight Infiniium Scope \(page 21\)](#)
- [Installing 89600 Software in a Keysight Logic Analyzer \(page 23\)](#)

## Installing 89600 Software in a PC

To install the Keysight 89600 software in a remote PC configuration:

1. Close any applications you have open.

**NOTE**

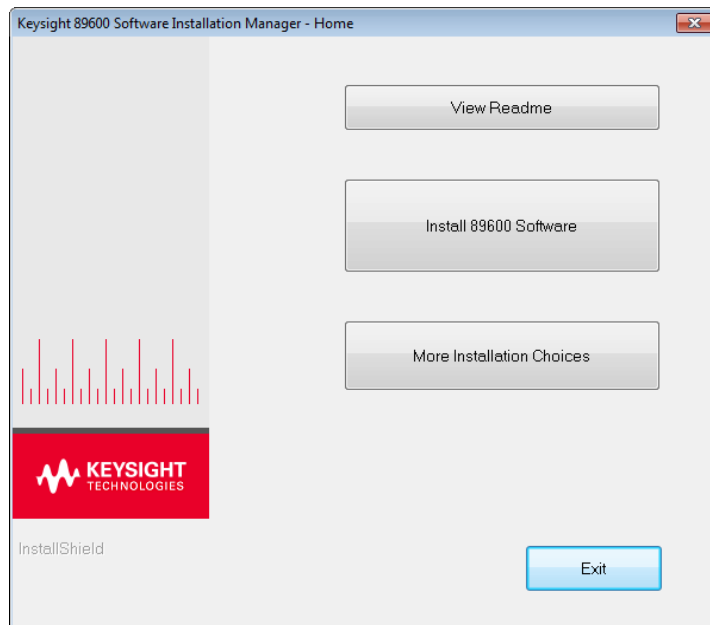
To install the Keysight 89600 software, you must have administrator privileges.

---

2. Insert the Keysight 89600 software installation DVD.
3. If the installation utility does not start automatically, navigate to the DVD drive and double-click this file:

**autoplay.exe**

4. When the Keysight 89600 Installation Manager window opens, click **View Readme** then review the following sections of the Readme file.
  - Required Minimum License Version
  - Installation Information



5. After reviewing the Readme file, start the software installation by clicking **Install 89600 Software**. Step through the InstallShield Wizard and stop at the *Select Products and Features* window.
6. Select the Products and Features you want to install, click **Next** then continue through the InstallShield Wizard to complete the installation.

**NOTE**

If you are installing Keysight 89600 WLA Software, click the Keysight 89600 WLA Software option. The Keysight 89600

---



---

**NOTE** WLA Software can only be installed with the Keysight 89600 VSA Software. However the WLA Software can be installed at a later time.

---

**IMPORTANT** Windows 8: if you do not have .NET Framework 3.5 installed, a dialog will pop up during installation that will prompt you to install the .NET Framework. Please click **Download and install this feature**. If you do not have Internet access, you can follow the procedure [Installing .NET Framework 3.5 on Windows 8 PCs \(page 18\)](#) to install the .NET Framework from the Windows 8 Installation DVD.

---

7. After the 89600 software installation has finished, the *Select Hardware Support* dialog opens. Hardware support adds hardware connectivity to the 89600 software. You can select the **Hardware Support Menu** option (default selection) to add hardware support now or select **Do not install hardware support** to not install this functionality. If you select *Do not install hardware support*, you can install hardware support at a later time—see the *89600 Software Installation Guide* for instructions.
  - a. To add hardware support, select **Hardware Support Menu** then click **Next**.
  - b. On the *Hardware Support Menu* dialog, select the components to add then click **Install Hardware Support** and follow the prompts to complete the installation.
8. The installation process configures your system environment for the 89600 software applications. Some installations may require a system PC reboot. If this occurs, click **OK** to reboot.

**IMPORTANT** After rebooting you will need to be logged on with administrative privileges to complete the installation.

---

**NOTE** When installing from a remotely mounted DVD drive, the remote drive must be configured to reconnect at logon so that the installation files can be located after the reboot.

---

9. When the installation is complete, exit the Installation Manager.
10. Start the 89600 VSA. Click **Start > (All) Programs > Keysight 89600 Software xx.y > Keysight 89600 VSA xx.y** (where xx.y is the VSA version number).

Next the software and options need to be licensed. To learn how to obtain a license, see [Installing Licenses \(page 25\)](#).

**TIP**

The first time you install the 89600 software on Windows 8, a tile for each 89600 software shortcut will be created on the Start screen. You can right-click these tiles and remove them from the Start screen by choosing **Unpin from Start**; or drag to rearrange them into a group, and name the group by zooming out (click "-" at bottom right of screen) and then right-clicking the group and choosing **Name group**.

---

## Installing .NET Framework 3.5 on Windows 8 PCs

Follow this procedure to install the .NET Framework 3.5 before installing the 89600 software on Windows 8 PCs *without Internet access*.

1. Check to see if .NET Framework 3.5 is already installed
  - a. Click **Control Panel > Programs > Turn Windows features on or off**
  - b. If the **.NET Framework 3.5 (includes .NET 2.0 and 3.0)** check box is completely empty, continue with the rest of this procedure. Otherwise, skip to step 2 in [Installing 89600 Software in a PC \(page 16\)](#)
2. Close the **Windows Features** dialog
3. If you have a *Windows 8 Installation DVD*, insert it into your computer or mount the ISO image.  
If you don't have a *Windows 8 Installation DVD*, use the files in the Keysight\_89600\_dvd installation folder.
4. Open an Administrator command prompt
  - a. Move the mouse to the lower left-hand corner of the screen.
  - b. Right-click and choose **Command Prompt (Admin)**
  - c. Click **Yes** at the **User Account Control** dialog if prompted
5. Type the following command (on a single line) and press Enter:  
`dism /online /enable-feature /featurename:NetFX3 /Source:<dot-net-location> /limitaccess`  
where <dot-net-location> is defined as:
  - `<installed drive>:\Keysight_89600_dvd\ISSetupPrerequisites\{074EE22F-2485-4FED-83D1-AAC36C3D9ED0}` or
  - `d:\sources\sxs` where d is the drive where the Windows 8 DVD is mounted.
6. Wait until the feature is installed (you will see the text: "The operation completed successfully.")
7. Restart the computer if prompted
8. Proceed with step 2 in [Installing 89600 Software in a PC \(page 16\)](#)

## Installing 89600 Software in a Keysight X-Series Signal Analyzer

**NOTE** Verify that the Instrument software revision (**System** hardkey > **Show** softkey > **System** softkey) is A.13.XX or greater.

---

Since the Keysight X-Series Signal Analyzers do not have internal DVD drives, you must first copy the contents of the Keysight 89600 software DVD onto a USB Drive. The Keysight 89600 software DVD is not protected or encrypted. The copy will be identical to the original DVD.

**NOTE** This procedure assumes that a USB Flash Drive is being used. Other USB storage devices, such as a USB hard drive or USB DVD drive, could also be used.

---

To install the 89600 VSA software in a Keysight X-Series Signal Analyzer using a USB Flash drive:

1. Insert the Keysight 89600 software DVD into a PC's DVD drive. If the Keysight 89600 Installation Manager window opens, close the installer program (click **Exit**).
2. Insert a USB Flash Drive into a USB port on the same PC in which the Keysight 89600 software DVD is loaded.
3. Use Windows Explorer to copy the contents of the Keysight 89600 software DVD onto the USB Flash Drive.
4. Connect a USB keyboard and mouse to the analyzer.

**NOTE** To install the Keysight 89600 software on the analyzer, you need to have administrator privileges. Press **Ctrl - Alt - Delete**, then click **Log Off....** Log back in as the Administrator. Depending on your instrument's installed Windows OS image version, the default administrator password is either [agilent4u](#) or [Keysight4u!](#).

---

5. Insert the USB Flash Drive into an available USB port on the analyzer.
6. Open Windows Explorer and navigate to the USB drive.
7. Double-click **autoplay.EXE**.
8. When the Keysight 89600 Installation Manager window opens, please read the Readme information.
9. After you read the Readme file, close it, then click **Install 89600 Software**. Continue through the InstallShield Wizard until you reach the *Select Products and Features* window.
10. Select the features you want to install, then continue through the InstallShield

Wizard to complete the installation.

11. When the installation is complete, exit the Installation Manager.
12. Start the X-Series analyzer application: Double-click the **LaunchXSA** icon on the Windows desktop.
13. After the X-Series analyzer finishes booting up, start the Keysight 89600 software:
  - UXA - Press the Spectrum Analyzer [N] Swept SA tab, then press the 89600 VSA button to launch the VSA software.
  - All other X-Series signal analyzers - Press the **Mode** hardkey, then press the **More** softkey until the **89601 VSA** softkey appears. Press the **89601 VSA** softkey followed by the **Start 89601B** softkey to launch the VSA software).

Next the software and options need to be licensed. To learn how to obtain a license, see [Installing Licenses \(page 25\)](#).

## Installing 89600 Software in a Keysight Infiniium Scope

**IMPORTANT** Embedded operation with the 89600 is not recommended for the Infiniium 8000 and 80000 Series scopes.

---

Many Infiniium oscilloscopes provide an open Microsoft Windows 7 operating system that enables you to install other applications. You can install and operate the 89600 Vector Signal Analysis software on these scopes.

Some Keysight Infiniium scopes have no DVD drive, so for these scopes you must use a USB drive. If you are installing from a USB drive, you must copy the contents of the Keysight 89600 software DVD onto the USB Drive. The Keysight 89600 software DVD is not protected or encrypted. The copy will be identical to the original DVD.

To install the 89600 VSA and 89600 WLA software in a Windows 7 scope:

1. Increase the scope's virtual memory to at least 1 GB as follows:
  - a. Minimize the scope application.
  - b. Navigate to: **Control Panel > Administrative Tools** (double-click) > **Computer Management** (double-click) > **Computer Management (Local)** (right-click) > **Properties > Advanced** (tab) > **Performance Settings** (button) > **Virtual Memory - Change** (button) to display the Virtual Memory dialog screen.
  - c. Set Initial Size (MB) and Maximum Size (MB) to 1000 MB (or more if you have sufficient Space Available), then click **Set > OK > OK** (reboot message) > **OK > OK**.
  - d. When the *System Settings Change* dialog appears, click **Yes** to restart the computer.
2. Insert the Keysight 89600 software installation DVD into the scope's DVD drive. If your scope does not have a DVD drive, use the following procedure:

**NOTE** This procedure assumes that a USB Flash Drive is being used. Other USB storage devices, such as a USB hard drive or USB DVD drive, could also be used.

---

- a. Insert the Keysight 89600 software DVD into a PC's DVD drive. If the Keysight 89600 Installation Manager window opens, close the installer program (click Exit).
- b. Insert a USB Flash Drive into a USB port on the same PC that the Keysight 89600 software DVD is in.
- c. Copy the contents of the Keysight 89600 software DVD onto the USB Flash Drive.
- d. Connect a USB keyboard and mouse to the scope.

**NOTE**

To install the Keysight 89600 software on the scope, you need to have administrator privileges. Press **Ctrl - Alt - Delete**, then click **Log Off....** Log back in as the Administrator.

---

- e. Insert the USB Flash Drive into an available USB port.
  - f. Open Windows Explorer and navigate to the USB drive.
  - g. Double-click **autoplay.EXE** to bring up the Keysight 89600 Installation Manager.
3. When the Keysight 89600 Installation Manager window opens, please read the Readme information.
  4. After you read the Readme file, close it then click **Install 89600 Software**. Continue through the InstallShield Wizard until you reach the *Select Products and Features* window.
  5. Select the features you want to install, then continue through the InstallShield Wizard to complete the installation.
  6. When the installation is complete, exit the Installation Manager.
  7. Start the 89600 VSA. Click **Start > Programs > Keysight 89600 Software xx.y > Keysight 89600 VSA xx.y** (where xx.y is the VSA version number).

Next the software and options need to be licensed. To learn how to obtain a license, see [Installing Licenses \(page 25\)](#).

## Installing 89600 Software in a Keysight Logic Analyzer

Some Keysight Logic Analyzers have no DVD drive, so for these analyzers you must use a USB drive. If you are installing from a USB drive, you must copy the contents of the Keysight 89600 software DVD onto the USB Drive. The Keysight 89600 software DVD is not protected or encrypted. The copy will be identical to the original DVD.

To install the 89600 VSA and 89600 WLA software in a logic analyzer:

1. Insert the Keysight 89600 software DVD into the logic analyzer's DVD drive. If your logic analyzer does not have a DVD drive, use the following procedure:

**NOTE** This procedure assumes that a USB Flash Drive is being used. Other USB storage devices, such as a USB hard drive or USB DVD drive, could also be used.

---

- a. Insert the Keysight 89600 software DVD into a PC's DVD drive. If the Keysight 89600 Installation Manager window opens, close the installer program (click Exit).
- b. Insert a USB Flash Drive into a USB port on the same PC that the Keysight 89600 software DVD is in.
- c. Copy the contents of the Keysight 89600 software DVD onto the USB Flash Drive.
- d. Connect a USB keyboard and mouse to the analyzer.

**NOTE** To install the Keysight 89600 software on the logic analyzer, you need to log on with administrator privileges.

---

- e. Insert the USB Flash Drive into an available USB port on the analyzer.
  - f. Open Windows Explorer and navigate to the USB drive.
  - g. Double-click **autoplay.EXE** to bring up the Keysight 89600 Installation Manager.
2. When the Keysight 89600 Installation Manager window opens, please read the Readme information.
  3. After you read the Readme file, close it then click **Install 89600 Software**. Continue through the InstallShield Wizard until you reach the *Select Products and Features* window.
  4. Select the features you want to install, then continue through the InstallShield Wizard to complete the installation.

5. When the installation is complete, exit the Installation Manager.

**NOTE**

When installing the 89600 VSA in a logic analyzer mainframe, **Hardware support** is disabled. This prevents using disk space for unnecessary components that are not needed when the 89600 VSA software is installed in a logic analyzer.

---

6. Start the 89600 VSA. Click **Start > (All) Programs > Keysight 89600 Software xx.y > Keysight 89600 VSA xx.y** (where xx.y is the VSA version number).

Next the software and its options must be licensed. To learn how to obtain a license, see [Installing Licenses \(page 25\)](#).



## Installing Licenses

The 89600 software and options must be licensed to operate in a useful manner. The 89600 software has four types of licenses: Demo, Trial, Transportable, and Floating. The Demo license is installed with the 89600 software.

This chapter describes how to install a Transportable license. For instructions on installing the other types of licenses, see the Installation Guide (InstallationGuide.pdf), which is available on the installation DVD in the **manuals** folder, during installation by clicking **More Installation Choices > View Installation Guide**, or after you install the software in **C:\Program Files\Agilent\89600 Software xx.y\89600 VSA Software\Help** (where xx.y is the VSA version number).

## Transportable License

This section describes the steps to obtain and install a Transportable license. The Transportable license enables the 89600 software and options that you purchased. The license must be installed on the same computer that runs the 89600 software. However, the license can be transferred from one computer to another computer.

Licensing the 89600 Software is a two step process:

1. Redeem the License.  
Go to [Redeeming a transportable license \(page 26\)](#).
2. Install the License file.  
Go to [Installing a transportable license \(page 27\)](#).

**NOTE** The term PC refers to any computer or instrument (such as analyzers and oscilloscopes) running the 89600 software.

---


### Redeeming a transportable license

To redeem a Transportable license, follow these steps:

1. Collect the Software License Entitlement Certificates for all 89600 software options that you purchased. The Software License Entitlement Certificates are included with the *89600 VSA Software Installation Materials* envelope (printed on gray parchment).

**NOTE** The Software License Entitlement Certificate also includes instructions to redeem your licenses.

---

2. Obtain the Host identification information (Host ID) for the PC on which you are installing the 89600 software license. Use the Keysight License Service utility or Keysight License Manager to obtain the *Host ID*.
  - a. Open the **About Keysight License Service** utility, right click the **Keysight License Service** icon  in the Windows desktop notification area (lower right side of the Windows Task bar) and select **About Keysight License Service**.
  - b. Click the **Copy** button to the right of the Host ID box. The Host ID information is copied into the Windows clipboard.

3. Redeem your licenses and obtain the license files.

Follow the instructions included on the *Software License Entitlement Certificate* to redeem your licenses and obtain the license files. Go to the *Keysight Software Manager* website:

<http://www.keysight.com/find/softwaremanager>

- First time access will require you to register.


**IMPORTANT** Remember your user password. The password is required for future access to manage your licenses.

---

- You will need the *Keysight Order Number* and *Keysight Certificate Number* located on the top of your *Software License Entitlement Certificate*.
4. Install License File(s): Check your email for the license file(s) and then install the license file(s) on the PC—go to [Installing a transportable license \(page 27\)](#).

## Installing a transportable license

Installing the license file is necessary to license the 89600 software. After completing [Redeeming a transportable license \(page 26\)](#), you will receive a Keysight email containing your license file for the redeemed Entitlement Certificates. Follow these steps to install the license files on the PC:

1. Copy the email attachment with the *.lic* file extension to a folder on your PC, connected hard drive, or USB storage device.
2. Start the Keysight License Manager: click **Utilities > Licenses > Status > Keysight License Manager** or double click the Keysight License Service icon .
3. To install the license file, *drag-and-drop* the license file onto your computer or instrument's connection in the Keysight License Manager's list of connections. See the *Add a New License* section of the Keysight License Manager Help for more ways to install the license (click the "?" icon to from within the Keysight License Manager to open the help file, or click **Start > (All) Programs > Keysight License Manager > Keysight License Manager Help**).

**NOTE** The install operation can take up to 40 seconds to complete.

---

When the license file is successfully installed, the installed transportable licenses that are available are listed in the Keysight License Manager's main license view area. Make sure your licensed options and features are shown.

4. After installing the license file, verify that the Options are licensed for use by the Keysight 89600 software. Start the Keysight 89600 software, open the *Licenses Options* dialog (click **Utilities > Licenses > Options**) and verify the options are correctly licensed (Yes in the On column).

"On" Column	License Status
Yes	Option is licensed for use.
--	Dash indicates that the license option has not been selected for use by the VSA. To include an option, open the <i>Select License Options</i> system utility and select (check) the options that you want to include in the VSA measurement capability (click <b>Start &gt; (All) Programs/All apps &gt; Keysight 89600 Software xx.y &gt; System Utility &gt; Select License Options</b> , where xx.y is the VSA version number). The VSA must be closed and restarted to incorporate the changes.
No	Option is not licensed for use.

## Using the VSA Online Help and Demos

Now that you have installed and licensed your Keysight 89600 software, it is time to start using it. The best way to learn how to use the VSA software is to view the online help and demo signal packages.

There are multiple ways to access the 89600 VSA help, as described on the following pages in this chapter.

## Accessing Help

### Start menu

After installing the 89600 VSA software, you can click the Windows **Start** button > **(All) Programs > Keysight 89600 Software 20.00 > Help > Help** to open the 89600 VSA help system.

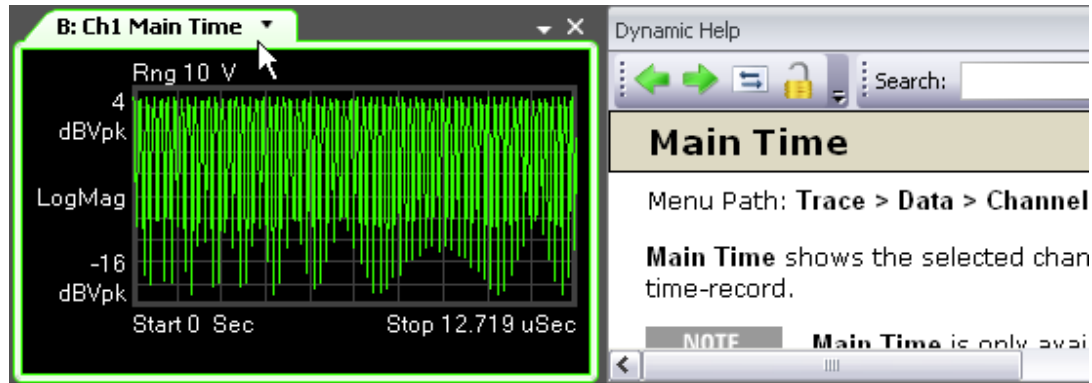
### Help menu

While the VSA software is running, click **Help** from the main menu then select one of the following menu items:

This menu item...	Does this...
Show Help	Opens the 89600 VSA help system in an external window.
Search Help	Opens the 89600 VSA help system to the search tab.
Dynamic Help	Opens the dynamic help panel. By default, dynamic help is shown in a tool window that is docked to the right-hand side of the VSA main window.
Getting Started	Opens a topic with links to information about getting started with the 89600 VSA.
Demos	Opens a list of demo signals that are provided with the VSA.
.NET API Reference	Opens the 89600 VSA .NET API reference in a separate help window.
SCPI Reference	Opens the 89600 VSA SCPI reference in a separate help window.
Keysight 89600 VSA website	Opens the 89600 VSA website in the default web browser.
Keysight VSA forums	Opens the Keysight VSA forums.
Technical Support	Opens the 89600 VSA Technical Support website.
About...	Shows information about the VSA software, including what software version is installed on your computer.

## Dynamic help

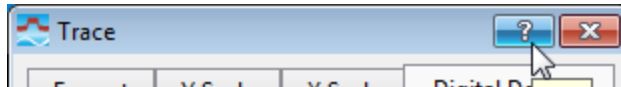
Dynamic help is the quickest and easiest method to find help. To open the dynamic help window, select **Help > Dynamic Help**. The current topic follows the user interface item that currently has focus.



## Help button on dialogs

You can access help for any dialog box by clicking the **?** button in title bar of the dialog box.

In the following illustration, clicking the **Help** button opens the VSA help for the **Format** tab of the **Digital Demod Properties** dialog box.



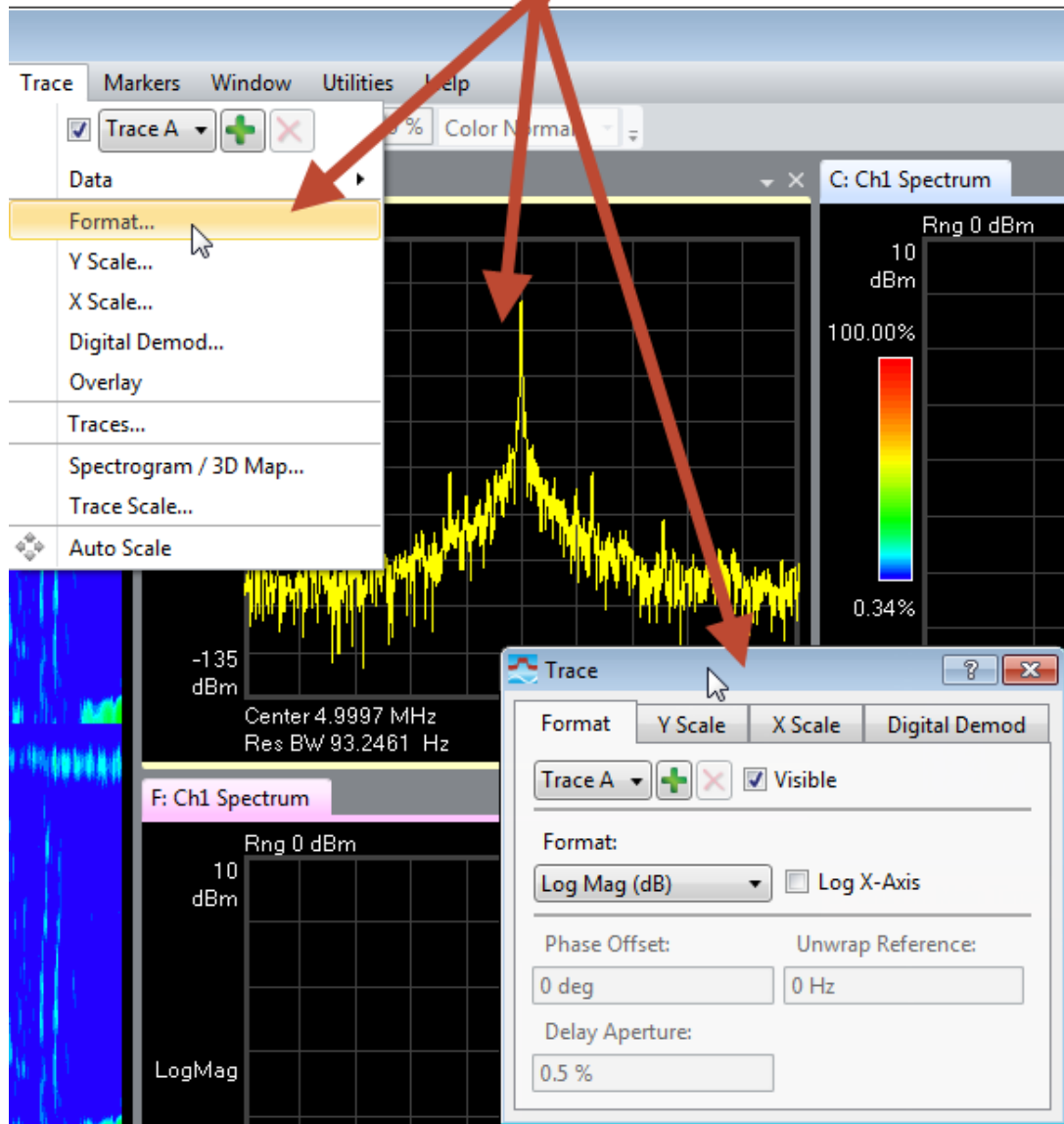
## F1 on the keyboard

You can access context-sensitive help by pressing the **F1** key.

When you are viewing a dialog box, pressing **F1** shows the same information as clicking the **?** button. The **F1** help also works on menus and traces.

Pressing **F1** while a menu item is highlighted opens context-sensitive help for that menu item.

## F1 Help






## Recalling a Demo Signal Package

Recalling a demo signal package is a good way to learn about the measurement capabilities and features of the 89600 VSA. The 89600 VSA provides various demo signal packages that include recorded signals, signal setup files, or Signal Studio setup files, and a demo help topic.

To view the available demo signals, open the *Demo and Recorded Signals* help topic (click **Help > Demos**).

To recall a demo:

1. Click **File > Recall > Recall Demo**.
2. In the *Recall Demo* dialog, browse to **C:\Program Files\Agilent\89600 Software xx.y\89600 VSA Software\Help\Signals** where xx.y is the version number of the software.
3. Select a Demo file of interest. For example, browse to AM FM PM, then select *XMITTER.htm*.
4. Click **Open**. The VSA recalls the instrument setup (measurement state), loads the recorded signal, and opens the corresponding help file in a separate window.
5. Read the Demo help file to learn about the recorded signal and the VSA setup information.
6. To start the measurement, click the Restart button () in the tool bar or click **Control > Restart**.



This information is subject to change without notice.

© Keysight Technologies 2016

Edition 1, April 2016

89600-90266

[www.keysight.com](http://www.keysight.com)