

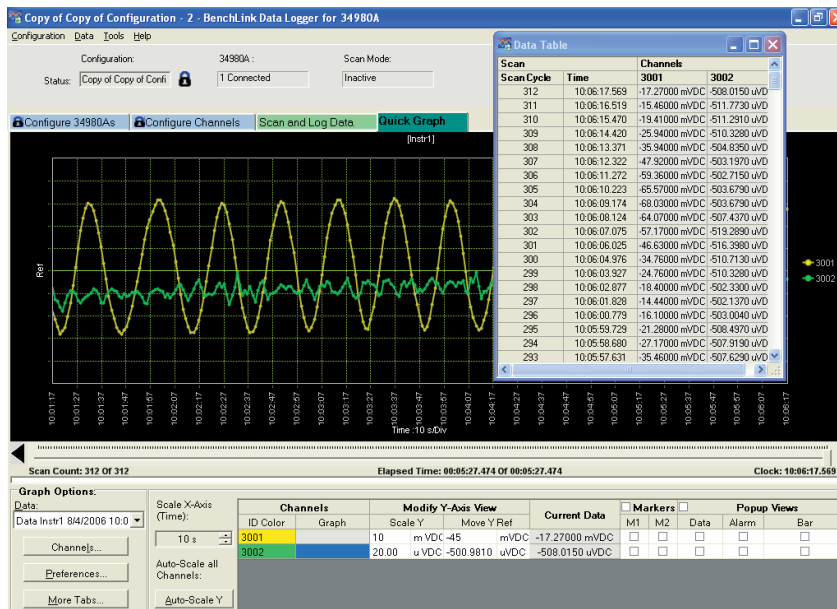
Keysight Technologies 34826A – BenchLink Data Logger Software for 34980A

Data Sheet

High-speed data logging with no programming required

Key features

- Supports high-performance data logging for the 34980A Switch/Measure unit
- Quick test setup and execution
- Set alarms and execute scans
- Collect, monitor and manage data
- Present data on a single or multiple graphs
- Export data to other applications for presentation and analysis



The Keysight Technologies BenchLink Data Logger software provides a convenient way to collect and analyze your data. This software is a Windows-based application that uses a familiar spreadsheet environment to define measurement data to be collected. The tab-based format makes it easy to set up and initiate scans. Simply identify the measurements you want to acquire, initiate the process, and see the data displayed real-time.

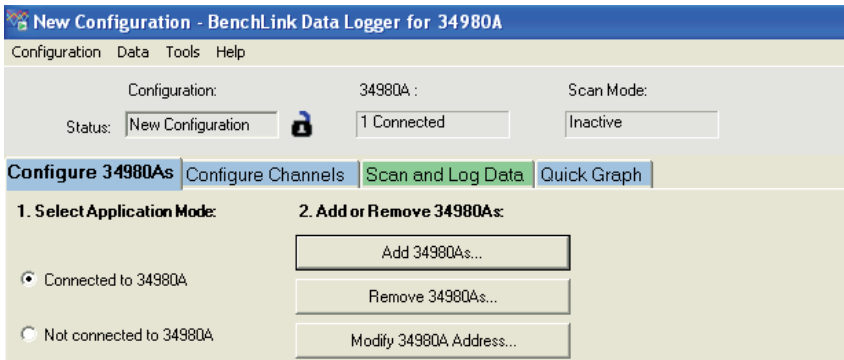
With the BenchLink Data Logger software you get PC-based data logging capability without spending hours programming.

This BenchLink software supports advanced features of the 34980A. You can log data at high speeds with the 34925A FET multiplexer at 900 ch/sec. Additionally, with the high-density capabilities of the 34980A, you can capture up to 560 2-wire multiplexer channels from one 34980A mainframe, or 1120 channels from two 34980As.

With the Windows tabbed-based interface, you can use the 4 easy steps to setup and capture your data:

- Configure 34980As
- Configure Channels
- Scan and Log Data
- Quick Graph

You can specify individual channel setups and perform statistical calculations to analyze the data points you want. Create computed channels for mathematical relationships with +, -, *, /, dB, dBm, dBV, \sqrt{x} , SRT, full, $\sqrt{1/2}$ or $1/4$ bridge strain. Graph your data, save it to disk, or you can copy data to the Windows clipboard for export to other applications.



The raw data is saved in .CSV format and can be easily imported into standard Microsoft® applications such as Microsoft Word and Excel for further analysis and documentation. Whether you monitor incoming data or review historical data, you can use one of the many analog or digital options to display your data.

The Windows user interface is also localized into multiple languages and includes context sensitive help.

Use the quick graph tab to monitor your data real time. You can specify multiple channels per graph, or send collected data to multiple graphs. Use strip charts with markers and alarm indication, or histograms with statistics. Also, the graphs can be copied into other applications for inclusion in presentations or reports.

Additional display options include single channel results with AVG, MIN, and MAX.

Data management is vital for data logging applications. The BenchLink software features a data manager that allows you to easily manage all configurations and dataset files. Use this feature to copy instrument settings, find related data logs, rename files, edit comments, export data logs to Comma separated variable (CSV) format or just delete unwanted data.

Specifications

System requirements

Operating system:

Windows 7 and Windows Vista Pro, Enterprise and Ultimate (32 bit and 64 bit); XP SP1, SP2, SP3. (Does not support any Home edition)

Controller: Recommend Pentium 4, 800 MHz or greater, Min: Pentium III, 500 MHz

RAM: Recommend 256 MB or greater, Min 128 MB

Disk Space: Recommend 200 MB, Min 100 MB

Display: 1024x768 resolution, 256 colors

Adobe Acrobat Reader V5.0 or higher (to view documentation)

Included run-time

software components:

Microsoft .NET V1.1 Microsoft Data access components V2.8 SP1

Keysight Technologies IO Libraries Version 14.1 or later

(included on a separate CD)

Supported instruments

34980A Multifunction Switch/Measure Unit with DMM and any of the following modules:

- 34921A/22A/23A/24A/25A Multiplexers
- 34952A Multifunction Module
- Supports one instrument at full speed or 2 instruments at a reduced speed

Supported interfaces:

- IEEE-488 GPIB, LAN, USB

Performance

Scanning speeds with 34980A:

343921A/22A	100 ch/sec
34923A/24A	500 ch/sec
34925A	900 ch/sec
34952A	DIO read/write speed 95 ch/sec

** Speeds are for 4 1/2 digits, delay 0, display off, autozero off. Scanning is within bank on the same module. Add 10 ms for between banks or modules. See the 34980A data sheet for additional 34980A performance specs.*

Localization

GUI fully localized with context sensitive help in English, Simplified Chinese, Japanese, Korean, French, and German.

Ordering information

All 34980A switch/measure units ship with a free copy of BenchLink Data Logger software (34826A). An evaluation version of the BenchLink Data Logger Pro (34832A) software also ships with the 34980A Switch/measure unit. This version is fully functional and works for 30 days. A license is required to be installed on your PC to use the software beyond the evaluation period.

Optional: purchase the 34832A at a later date and install the license on your PC.

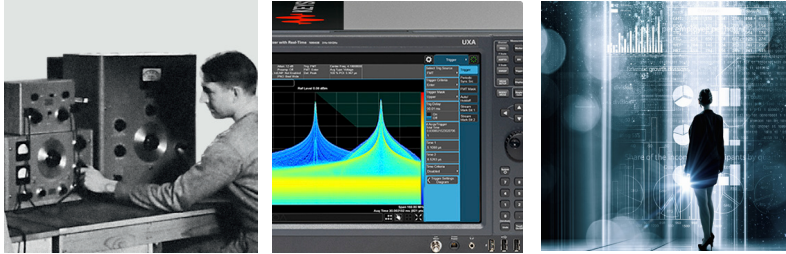
Related Literature

Keysight Technologies 34980A Multifunction Switch/measure Unit Data Sheet: 5989-1437EN

Evolving Since 1939

Our unique combination of hardware, software, services, and people can help you reach your next breakthrough. We are unlocking the future of technology.

From Hewlett-Packard to Agilent to Keysight.



myKeysight

myKeysight

www.keysight.com/find/mykeysight

A personalized view into the information most relevant to you.

http://www.keysight.com/find/emt_product_registration

Register your products to get up-to-date product information and find warranty information.

KEYSIGHT SERVICES

Accelerate Technology Adoption.
Lower costs.

Keysight Services

www.keysight.com/find/service

Keysight Services can help from acquisition to renewal across your instrument's lifecycle. Our comprehensive service offerings—one-stop calibration, repair, asset management, technology refresh, consulting, training and more—helps you improve product quality and lower costs.



Keysight Assurance Plans

www.keysight.com/find/AssurancePlans

Up to ten years of protection and no budgetary surprises to ensure your instruments are operating to specification, so you can rely on accurate measurements.

Keysight Channel Partners

www.keysight.com/find/channelpartners

Get the best of both worlds: Keysight's measurement expertise and product breadth, combined with channel partner convenience.

For more information on Keysight Technologies' products, applications or services, please contact your local Keysight office. The complete list is available at:

www.keysight.com/find/contactus

Americas

Canada	(877) 894 4414
Brazil	55 11 3351 7010
Mexico	001 800 254 2440
United States	(800) 829 4444

Asia Pacific

Australia	1 800 629 485
China	800 810 0189
Hong Kong	800 938 693
India	1 800 11 2626
Japan	0120 (421) 345
Korea	080 769 0800
Malaysia	1 800 888 848
Singapore	1 800 375 8100
Taiwan	0800 047 866
Other AP Countries	(65) 6375 8100

Europe & Middle East

Austria	0800 001122
Belgium	0800 58580
Finland	0800 523252
France	0805 980333
Germany	0800 6270999
Ireland	1800 832700
Israel	1 809 343051
Italy	800 599100
Luxembourg	+32 800 58580
Netherlands	0800 0233200
Russia	8800 5009286
Spain	800 000154
Sweden	0200 882255
Switzerland	0800 805353
	Opt. 1 (DE)
	Opt. 2 (FR)
	Opt. 3 (IT)
United Kingdom	0800 0260637

For other unlisted countries:

www.keysight.com/find/contactus
(BP-9-7-17)

DEKRA Certified
ISO 9001 Quality Management System

www.keysight.com/go/quality

Keysight Technologies, Inc.
DEKRA Certified ISO 9001:2015
Quality Management System



This information is subject to change without notice.

© Keysight Technologies, 2017
Published in USA, December 2, 2017
5989-5473EN
www.keysight.com