

# Keysight Technologies

## Using the Graphical Pin Locator on *Medalist* In-Circuit Test Systems

Application Note

### Introduction

Starting with software version 7.0 on the *Medalist* In-Circuit Test Systems, a graphical version of the familiar “Find Pins” tool is available in the Operator Graphical User Interface (GUI). The tool is called the Pin Locator and it is a part of the Operator GUI Browser. This application note will summarize its use and highlight some of the productivity enhancements provided.

## Using the Pin Locator

To use the Pins Locator, start the In-circuit Test (ICT) Browser and select the Locator Tab. You specify the pin you want to find (target pin) by selecting the type from the **Find** drop-down list and entering all or part of the name. Then click **Go**.

The target pin is centered in the graphics display area as shown in Figure 1.

Start the Locator by selecting **Probe** or **Mint pin** from the Locate drop-down list, then click **OK**. When the Probe Status indicates **Ready**, touch any pin on the board with the handheld probe. Notice that, unlike "Find Pins", **Auto** start is now the default.



Figure 1. Shows target pin in the center

In the graphics display area, the touched pin blinks. The **Guide** panel displays information on the touched pin. The **Results** panel displays all the BT-BASIC output and print statements, similar to the Output panel in the Operator Interface. Now, instead of using the fixture grid to find your target pin, refer to the arrows in the **Guide** and graphics display to quickly hone in on the desired pin as shown below in Figure 2.

When the user gets closer to the target pin, the graphics display is automatically enlarged to help with location of the target pin more easily. After a few quick probes, the user can quickly and easily find the target pin. A **FOUND** status is displayed when the user touches the target pin as shown below in Figure 3.

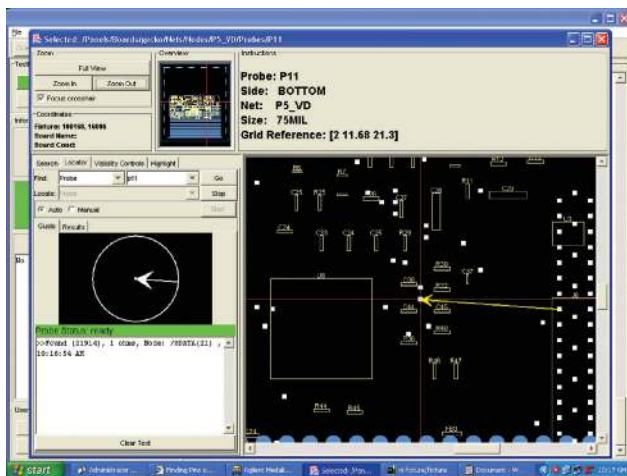


Figure 2. Hone in on desired pin

## Conclusion

The Pin Locator tool on the Keysight Technologies, Inc. *Medalist* In-Circuit Test Systems is an improvement over the old "Find Pins" tool. Give it a try!



Figure 3. Found is displayed when target pin is found



**myKeysight**

[www.keysight.com/find/mykeysight](http://www.keysight.com/find/mykeysight)

A personalized view into the information most relevant to you.



[www.axiestandard.org](http://www.axiestandard.org)

AdvancedTCA® Extensions for Instrumentation and Test (AXIe) is an open standard that extends the AdvancedTCA for general purpose and semiconductor test. Keysight is a founding member of the AXIe consortium. ATCA®, AdvancedTCA®, and the ATCA logo are registered US trademarks of the PCI Industrial Computer Manufacturers Group.



[www.lxistandard.org](http://www.lxistandard.org)

LAN eXtensions for Instruments puts the power of Ethernet and the Web inside your test systems. Keysight is a founding member of the LXI consortium.



[www.pxisa.org](http://www.pxisa.org)

PCI eXtensions for Instrumentation (PXI) modular instrumentation delivers a rugged, PC-based high-performance measurement and automation system.



**Three-Year Warranty**

[www.keysight.com/find/ThreeYearWarranty](http://www.keysight.com/find/ThreeYearWarranty)

Keysight's commitment to superior product quality and lower total cost of ownership. The only test and measurement company with three-year warranty standard on all instruments, worldwide.



**Keysight Assurance Plans**

[www.keysight.com/find/AssurancePlans](http://www.keysight.com/find/AssurancePlans)

Up to five years of protection and no budgetary surprises to ensure your instruments are operating to specification so you can rely on accurate measurements.



[www.keysight.com/quality](http://www.keysight.com/quality)

Keysight Technologies, Inc.  
DEKRA Certified ISO 9001:2008  
Quality Management System

**Keysight Channel Partners**

[www.keysight.com/find/channelpartners](http://www.keysight.com/find/channelpartners)

Get the best of both worlds: Keysight's measurement expertise and product breadth, combined with channel partner convenience.

For more information on Keysight Technologies' products, applications or services, please contact your local Keysight office. The complete list is available at: [www.keysight.com/find/contactus](http://www.keysight.com/find/contactus)

**Americas**

Canada	(877) 894 4414
Brazil	55 11 3351 7010
Mexico	001 800 254 2440
United States	(800) 829 4444

**Asia Pacific**

Australia	1 800 629 485
China	800 810 0189
Hong Kong	800 938 693
India	1 800 112 929
Japan	0120 (421) 345
Korea	080 769 0800
Malaysia	1 800 888 848
Singapore	1 800 375 8100
Taiwan	0800 047 866
Other AP Countries	(65) 6375 8100

**Europe & Middle East**

Austria	0800 001122
Belgium	0800 58580
Finland	0800 523252
France	0805 980333
Germany	0800 6270999
Ireland	1800 832700
Israel	1 809 343051
Italy	800 599100
Luxembourg	+32 800 58580
Netherlands	0800 0233200
Russia	8800 5009286
Spain	0800 000154
Sweden	0200 882255
Switzerland	0800 805353
	Opt. 1 (DE)
	Opt. 2 (FR)
	Opt. 3 (IT)
United Kingdom	0800 0260637

For other unlisted countries:  
[www.keysight.com/find/contactus](http://www.keysight.com/find/contactus)  
(BP-07-10-14)

