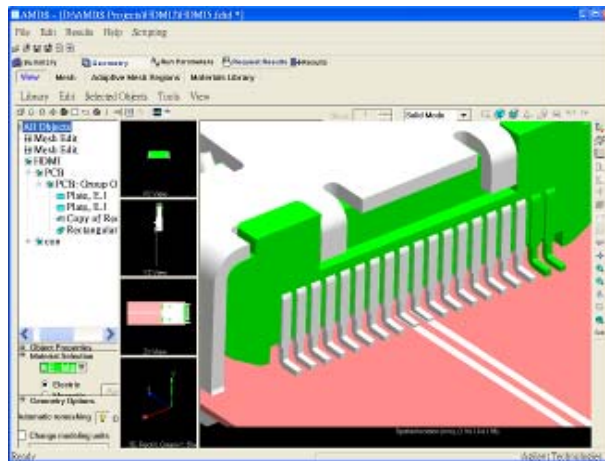


EM Insights Series



Episode #6:

High Speed Connector Modeling With EMPro

Agilent EEsof EDA
November 2008



Agilent Technologies

Application Overview

Typical situation

High speed connectors are widely employed for high speed digital signal transmission. With the progress of technology, more advanced transmission interfaces are used such as the Universal Serial Bus (USB), Digital Video Interface (DVI), High Definition Multimedia Interface (HDMI), etc. High speed connectors compatible with these interfaces are also advancing. Since these connectors are used for applications up to 10.2Gbit/s (for HDMI), accurate modeling and simulation of them becomes critical to successful high speed signal transmission.

Potential users and targeted market

- High speed connector/socket manufacturers

EM product used

- [Electromagnetic Professional \(EMPro\)](#)

Design Challenge

Design challenge

The HDMI has emerged as the data transmission standard for HDTV and other consumer electronics. Since HDMI is transmitting digital data without compression, it eliminates signal interference and attenuation usually required for traditional connection standards. An HDMI connector is a compact size connector that has up to 29 pins. The main design challenge is to maintain a good impedance profile (continuity) throughout multiple interconnect transitions, especially at high speed data rates.

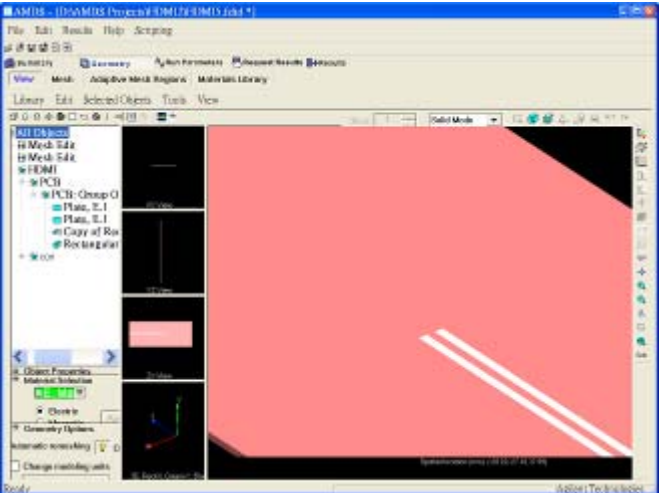
Problem solved

Speed of the time domain EM simulator helps in identifying problem areas, and discontinuities of connectors. Running multiple simulations in a fraction of the time lets you understand and optimize for a good impedance profile throughout the transitions. As a result, high performance connector designs can be achieved.

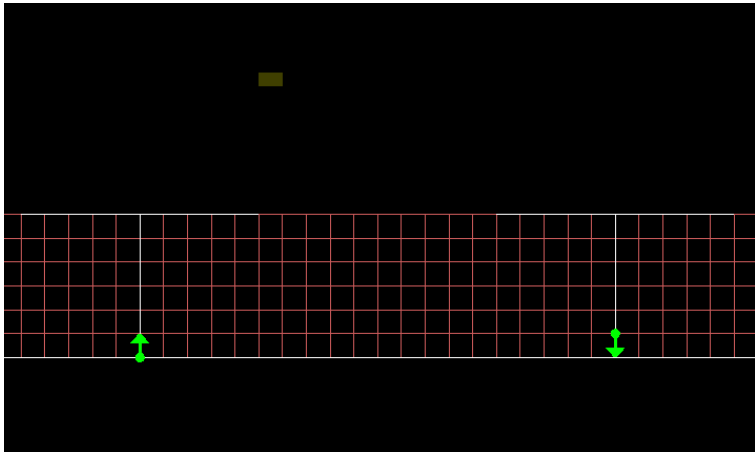
Value delivered

Faster and cheaper design of high speed connectors through accurate and fast EM simulations

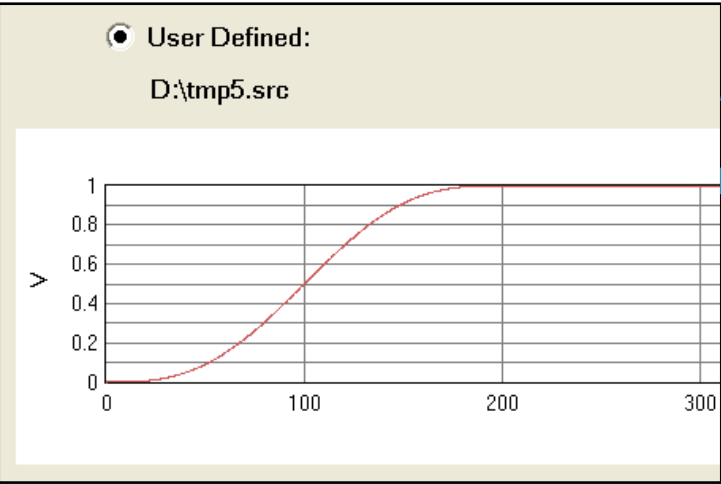
Modeling Connector's Impedance



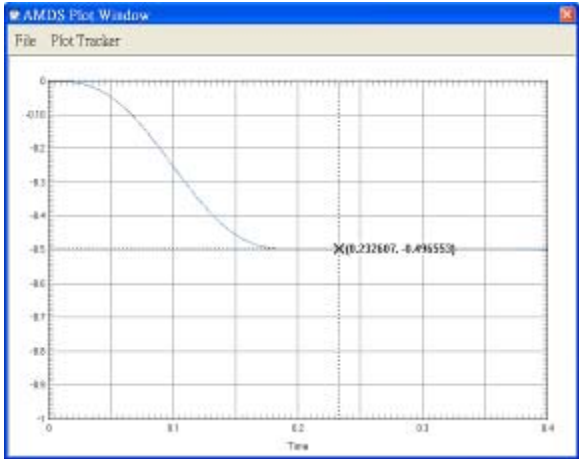
1. Build 100 ohm differential pair



2. Define differential sources



3. Assign step waveform



4. Simulate TDR signal

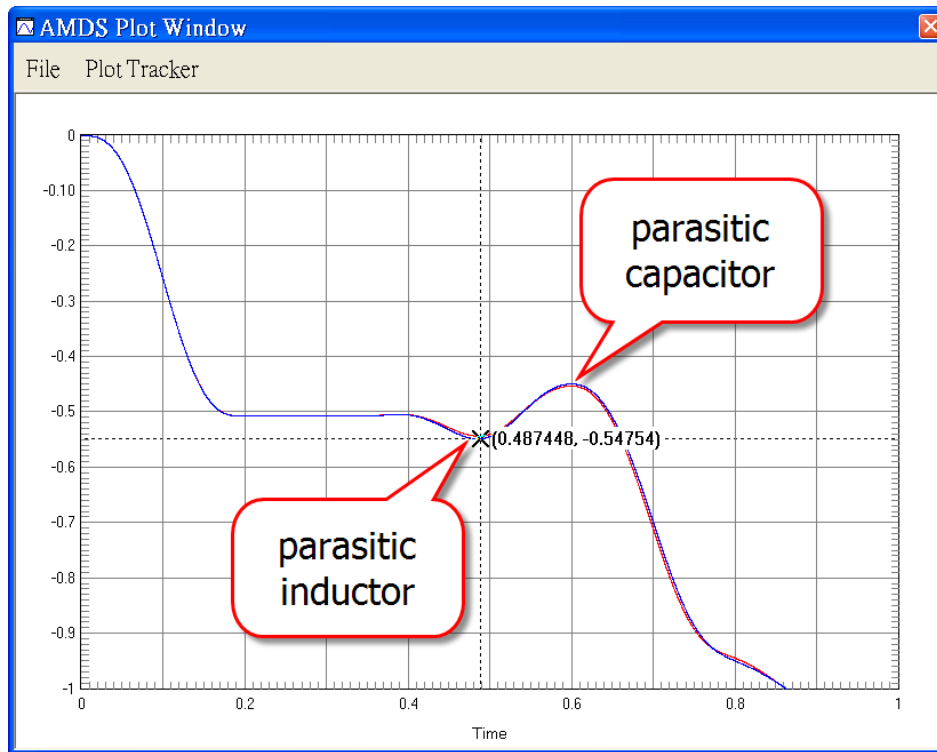
Sample Step Waveform with Python Script Language

```
sample_number=20000
time_step=222.4e-15
rising_time=100e-12
filename='c:/tmp5.src'
u=rising_time/2
s=rising_time/2
derivative=[]
sample=range(sample_number)
time=[X*time_step for X in sample]
voltage=[(1+(x-u)/s+(1/pi)*(sin((x-u)*pi/s)))/2 for
x in time if x<=rising_time]
y=(sample_number-len(voltage))*[1.0]
voltage=voltage+y

for i in range(len(voltage)-2):
    derivative.append((voltage[i+1]-
voltage[i])/time_step)
derivative.append(0.0)
derivative.append(0.0)
voltage.reverse()
derivative.reverse()
my_file=open(filename,'w')
my_file.write(str(sample_number)+'\n')

while voltage!=[]:
    my_file.write(str(voltage.pop())+'
'+str(derivative.pop())+'\n')
my_file.close()
```

Simulation Results on Impedance Plot



Memory consumed: 314.26 MB

Simulation time: 20 mins
(with one Acceleware card)

$$Z = 100 * (V1 + V2) / (2 - (V1 + V2)) = 100 * 1.08 / (2 - 1.08) = 117 \text{ Ohm}$$

EM Insights Series

Episode #6 Summary

Time domain EM simulation makes it easy to get the impedance data through the interconnect transitions. It also provides more efficient meshing to handle complicated 3D structures and faster simulation. The result is faster and cheaper designs of high speed connectors.

Interested in learning more about this application?

- Request an [evaluation copy of EMPro](http://www.agilent.com/find/eesof-empro-evaluation)
<http://www.agilent.com/find/eesof-empro-evaluation>
- Request a [demo of EMPro](http://www.agilent.com/find/eesof-contact)
<http://www.agilent.com/find/eesof-contact>

www.agilent.com

For more information about
Agilent EEs of EDA, visit:

www.agilent.com/find/eesof

For more information on Agilent Technologies' products, applications or services, please contact your local Agilent office. The complete list is available at:

www.agilent.com/find/contactus

Contact Agilent at:

Americas

Canada (877) 894-4414
Latin America 305 269 7500
United States (800) 829-4444

Asia Pacific

Australia 1 800 629 485
China 800 810 0189
Hong Kong 800 938 693
India 1 800 112 929
Japan 0120 (421) 345
Korea 080 769 0800
Malaysia 1 800 888 848
Singapore 1 800 375 8100
Taiwan 0800 047 866
Thailand 1 800 226 008

Europe & Middle East

Austria 01 36027 71571
Belgium 32 (0) 2 404 93 40
Denmark 45 70 13 1515
Finland 358 (0) 10 855 2100
France 0825 010 700*
*0.125 €/minute
Germany 07031 464 6333
Ireland 1890 924 204
Israel 972-3-9288-504/544
Italy 39 02 92 60 8484
Netherlands 31 (0) 20 547 2111
Spain 34 (91) 631 3300
Sweden 0200-88 22 55
Switzerland 0800 80 53 53
United Kingdom 44 (0) 118 9276201
Other European Countries:
www.agilent.com/find/contactus

Product specifications and descriptions in this document subject to change without notice.

© Agilent Technologies, Inc. 2009
Printed in USA, March 24, 2009
5989-9456EN