

Setting Up Hotkeys on the Agilent Technologies, Inc. *Medalist* Repair Tool

Application Note

Introduction

Users of Agilent's *Medalist* Repair Tool, also known as the Agilent Repair Tool or ART, can setup hot keys to increase the efficiency of image viewing in RT4.0. This applies to the *Medalist* 5DX and *Medalist* x6000 Automated X-ray Inspection System.



Agilent Technologies

Procedure to Enable Alternate Way of Viewing Slice Images

In previous ART, version 3.1, viewing between slices for a defect could be done in 2 ways.

1. Select drop down box in Image window and select the slice to view
2. Right click on Image and select **View Next Image** option

However in RT4.0, the right click selection option is not available, this application note intends to describe how to setup the alternative way of viewing slice images using Hotkeys.

1. In the RT4.0 User Interface, go to **Tools > Advanced Settings**, see Figure 1.
2. In the Advanced Settings menu, under **Function Keys** tab, you will see a list of keys from F1 to F12 which are actually function keys from the standard PC keyboard itself, see Figure 2.
3. The F1 Key is locked to the HELP feature so assigning Hotkeys will start from the F2 key. To assign **View Next Image** (as in ART3.1) function to a function key, select the key to be assigned (key F2 is used in this example) and click to open the drop down box to view a list of available functions that can be assigned as show in Figure 3.

4. To assign to **View Next Image** (view next slice) function to F2 key, scroll the list of functions until you find the function named **IMAGE_VIEW_NEXT_IMAGE** see Figure 4, select the function and click the "Apply" button and click OK, now the view next slice function can be used by pressing the F2 key on the keyboard.

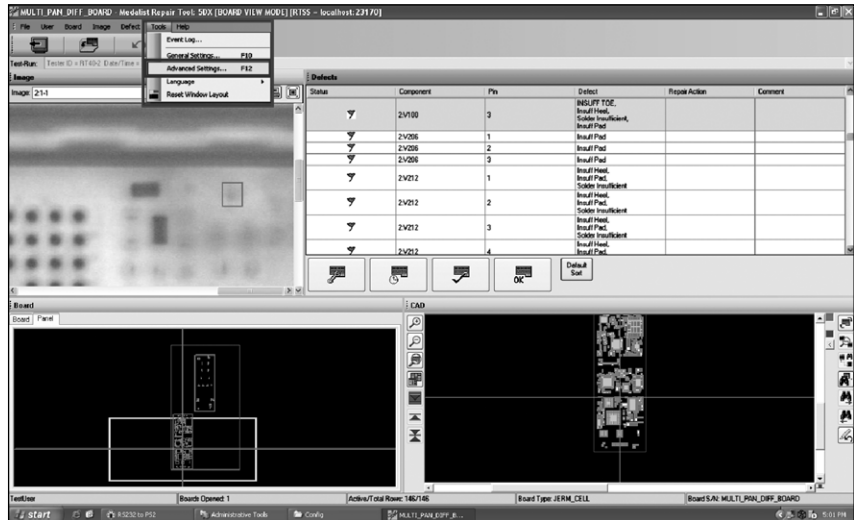


Figure 1. Interface screen shot relating to step 1

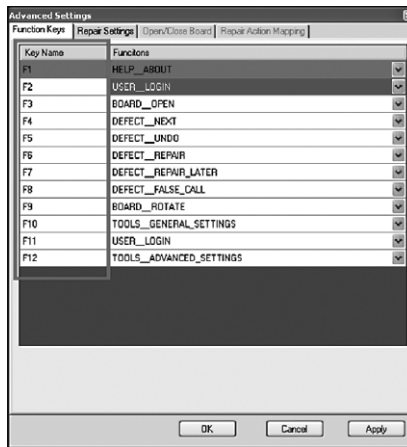


Figure 2. Function Keys Menu

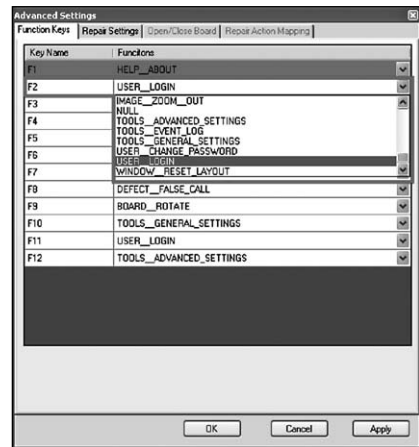


Figure 3. Available functions shown

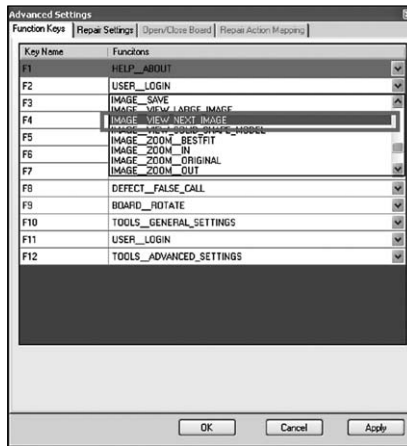


Figure 4. Select "IMAGE_VIEW_NEXT_IMAGE"

Procedure to Enable Viewing Images in a Larger Expanded Format

In most cases Pin Level zoomed in images already suffice for Repair Technician/Operator to identify the defect to be a true call or false call, however there are cases where a larger expanded image is needed to be able to have reference to other areas or components to buyoff the defect.

This section intends to describe how to setup the viewing of images in a larger expanded format using Hotkeys.

1. In the RT4.0 User Interface, go to **Tools > Advanced Settings**, see Figure 5.
2. To enable a function key (key **F3** is used in this example) to be assigned the function of viewing expanded image, click to open the drop down box for the key **F3** to view a list of available functions that can be assigned as show in Figure 6.
3. To assign to view expanded image function to **F3** key, scroll the list of functions until you find the function named **IMAGE_VIEW_LARGE_IMAGE** see Figure 7, select the function and click the **Apply** button and click **OK**, now the view expanded image function can be used by pressing the **F3** key on the keyboard.
4. Pressing the **F3** key for each defect from now on will call out a window that displays an expanded view of the defect image. See Figure 8:

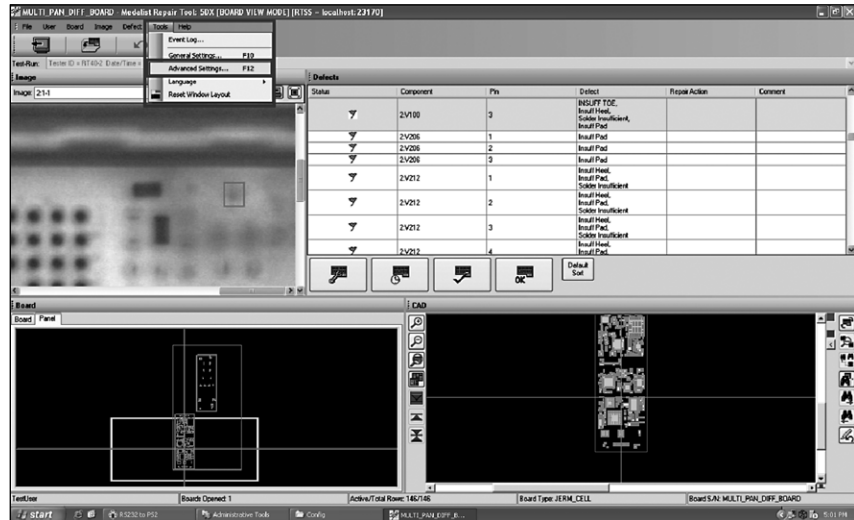


Figure 5: Interface screen shot relating to step 1

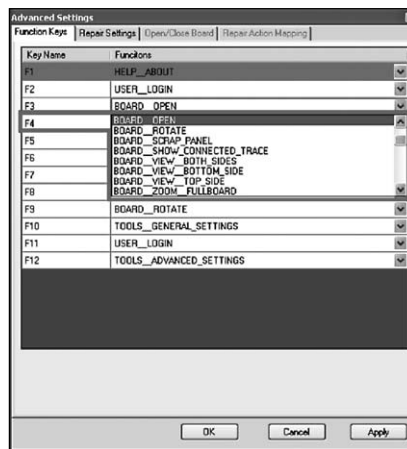


Figure 6: A list of available functions

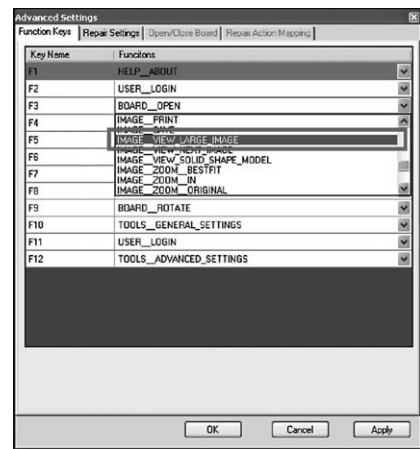


Figure 7: Select "IMAGE_VIEW_LARGE_IMAGE"

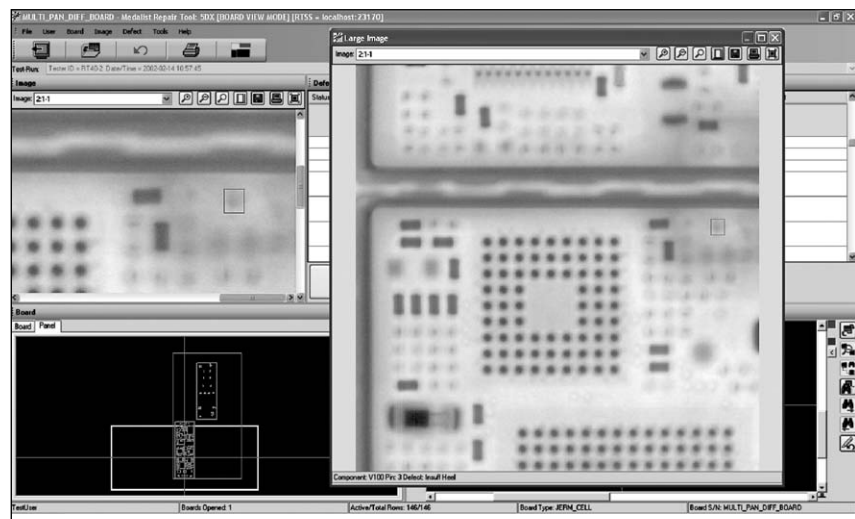


Figure 8: Larger image view enabled

Summary

Users of Agilent's *Medalist* Repair Tool can use the hotkeys setup herein to increase their efficiency while using the *Medalist* 5DX and *Medalist* x6000 Automated X-ray Inspection Systems.



Agilent Email Updates

www.agilent.com/find/emailupdates
Get the latest information on the products and applications you select.

www.agilent.com

www.agilent.com/find/axi

For more information on Agilent Technologies' products, applications or services, please contact your local Agilent office. The complete list is available at:

www.agilent.com/find/contactus

Americas

Canada	(877) 894-4414
Latin America	305 269 7500
United States	(800) 829-4444

Asia Pacific

Australia	1 800 629 485
China	800 810 0189
Hong Kong	800 938 693
India	1 800 112 929
Japan	0120 (421) 345
Korea	080 769 0800
Malaysia	1 800 888 848
Singapore	1 800 375 8100
Taiwan	0800 047 866
Thailand	1 800 226 008

Europe & Middle East

Austria	01 36027 71571
Belgium	32 (0) 2 404 93 40
Denmark	45 70 13 15 15
Finland	358 (0) 10 855 2100
France	0825 010 700*
	*0.125 €/minute
Germany	07031 464 6333**
	**0.14€/minute
Ireland	1890 924 204
Israel	972-3-9288-504/544
Italy	39 02 92 60 8484
Netherlands	31 (0) 20 547 2111
Spain	34 (91) 631 3300
Sweden	0200-88 22 55
Switzerland	0800 80 53 53
United Kingdom	44 (0) 118 9276201

Other European Countries:

www.agilent.com/find/contactus

Revised: July 17, 2008

Product specifications and descriptions in this document subject to change without notice.

© Agilent Technologies, Inc. 2008
Printed in USA, September 26, 2008
5989-9675EN



Agilent Technologies