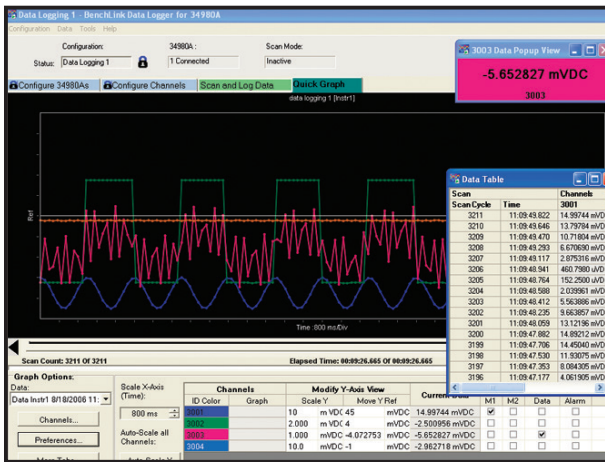
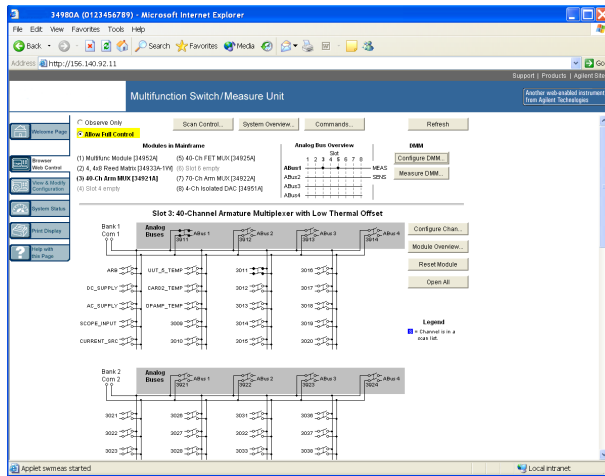


Keysight 34980A Data Acquisition and Switching

The 34980A provides flexible, reliable switching and data acquisition in one compact, economical box



Key features

- DAC/Switch unit (8-slots, up to 560 2-wire channels)
- Internal 6 ½ digit DMM for precision measurements
- Easy-to-read display to monitor the setup and measured values
- Easy-to-use front panel for manual setup control
- Scan rates at up to 1000 channels/second
- Computer interfaces: GPIB, USB, LAN (LXI)
- Easy remote access with built-in web interface
- Twenty-one different plug-in modules for the 34980A
- SCPI programming language, drivers and Data Logger software included

High quality switching with built-in 6 ½ Digit Digital Multimeter (DMM)

- Wide variety of switching: General purpose, multiplexer, matrix, RF, μ W, and μ W relay driver
- Internal DMM measures DC/AC voltage and current, resistance, temperature, frequency/totalize
- Digital to analog converters for analog output
- Digital input and output



Uncompromising performance

- High precision measurements
- High quality switching
- High productivity software

Everything you need to know about the mainframe

Features	34980A
Analog measurements	Voltage, current, resistance, frequency and temperature
Digital IO	Up to 512 bits
Analog output	-10 V to +10 V, 20 mA
Multiplexing	Max 640 1-wire, 560 2-wire
Matrix	Max 4096 crosspoints
General purpose	Max 256 switches
RF multiplexing	Max 128 channels, 3 GHz
μWave switching	Max 24 channels, 26 GHz
μWave switch/Attenuator drive	See Keysight μwave switches
Interface	GPIB, USB, LAN



Many 34980A modules are available in a standalone, LXI-compliant form factor

34980A plug-in modules

Part	Description
34921A	40 channel GP Mux with built-in thermocouple reference
34922A	70 channel Armature Mux
34923A	40/80 channel Reed mux
34924A	70 channel Reed mux
34925A	40/80 channel FET Mux
34931A	Dual 4x8 armature matrix
34932A	Dual 4x16 armature matrix
34933A	Dual/Quad 4x8 reed matrix
34934A	Quad 4x32 reed matrix
34937A	32 channel form C/form A
34938A	20 channel 5A form A
34939A	64 channel form A
34941A	Quad 1x4 3 GHz 50 Ω Mux
34942A	Quad 1x4 1.5 GHz 75 Ω Mux
34945A	μWave switch/Attenuator driver
34946A	Dual 1x2 SPDT 4 & 20 GHz Option 004 2 N1810TL 4 GHz term switches Option 020 2 N1810TL 20 GHz term switches Option 026 2 N1810TL 26.5 GHz term switches
34947A	Triple 1x2 SPDT 4 & 20 GHz Option 004 3 N1810UL 4 GHz unterm switches Option 020 3 N1810UL 20 GHz unterm switches Option 026 3 N1810UL 26.5 GHz unterm switches
34950A	64-bit digital I/O with counter
34951A	4 channel isolated DAC
34952A	Multi-function DIO DAC totalize
34959A	Breadboard

Accessories

Part	Description
34832A	BenchLink DataLogger Pro Software License for 34980A
34307A	10-pack J-type thermocouples
34308A	5-pack 10 Ω thermistors

For more information on Keysight switches please visit:
www.keysight.com/find/34980A

To find a distributor go to:
www.keysight.com/find/distributors

KEYSIGHT SERVICES

Accelerate Technology Adoption. Lower costs.

www.keysight.com/find/services

Keysight Services helps you improve productivity and product quality with our comprehensive service offerings of one-stop calibration, repair, asset management, technology refresh, consulting, training, and more.