

EMC CISPR Compliance Measurements

Keysight Technologies and ETS-Lindgren

Ensure your products meet the latest CISPR and other international EMC standards

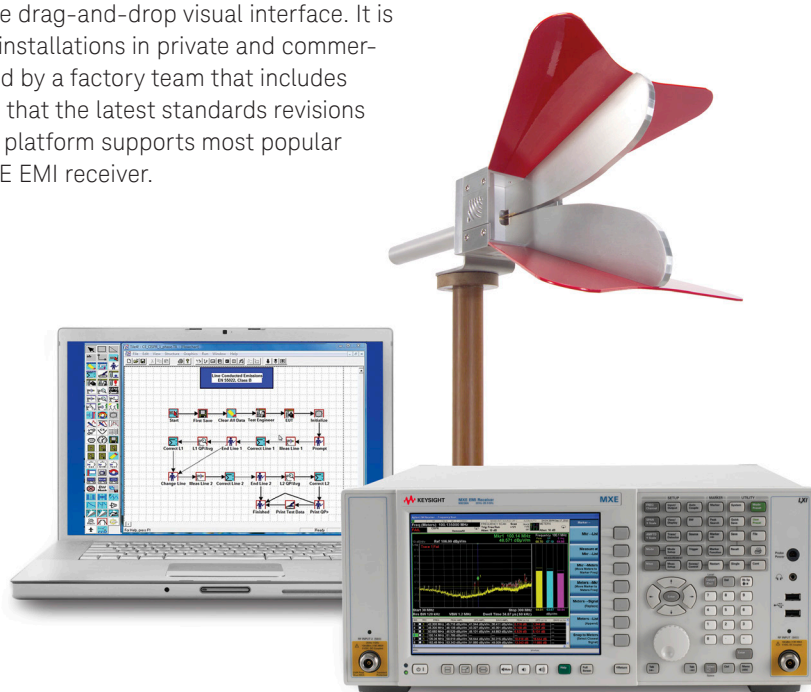
The continuing development of international electromagnetic compatibility and immunity (EMC/EMI) standards such as CISPR brings new challenges when trying to ensure the compliance of your products. The ability to address these challenges requires EMC/EMI lab management software and test instrumentation with the flexibility to adapt.

ETS-Lindgren and Keysight Technologies can provide the flexibility you need to ensure your products comply with the very latest CISPR standards. ETS-Lindgren's TILE!™ (Total Integrated Lab Environment) software when combined with the N9038A MXE EMI receiver from Keysight Technologies allow change to be accommodated easily – both for now and in the future.

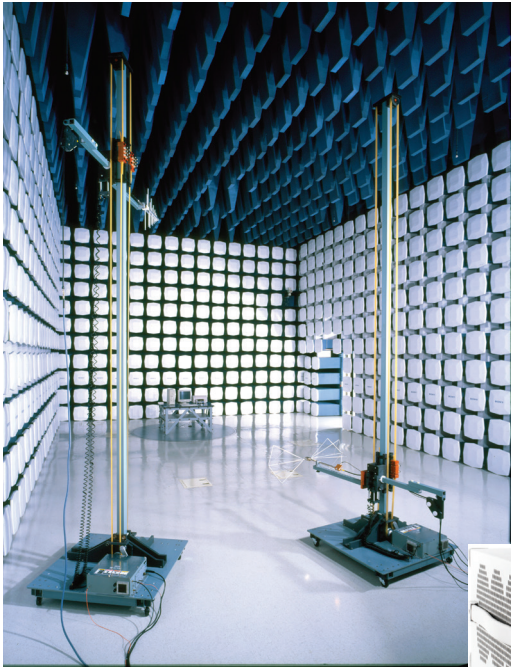
TILE! automates complex EMC tests with a simple drag-and-drop visual interface. It is a well-established solution, with more than 200 installations in private and commercial EMC test labs world-wide. TILE! is maintained by a factory team that includes members of the standards committees, ensuring that the latest standards revisions are incorporated in the software. The TILE! open platform supports most popular EMC instrumentation, including the Keysight MXE EMI receiver.

The Keysight MXE is more than a CISPR compliant EMI receiver, it features X-Series signal analysis and graphical measurement tools for easier examination of signal details. The MXE is fully compliant with CISPR 16-1-1 2010 and provides outstanding accuracy and sensitivity, extensive built-in diagnostic tools for EMI troubleshooting, two frequency ranges and all required detectors. The MXE allows you to move seamlessly between receiver and spectrum analyzer modes to speed the evaluation of your signal data.

- CISPR-compliant electromagnetic compatibility measurements
- Integrates Keysight MXE EMI receiver with ETS-Lindgren TILE! software
- Complete solution with ETS-Lindgren chambers and accessories
- Prove compliance to CISPR and other international standards



EMC CISPR Compliance Measurements



When integrated with EMC chambers, antennas, towers, turntables and test accessories from ETS-Lindgren, TILE! and the MXE provide the foundation of a comprehensive test system to meet all of your EMC compliance needs.

Together TILE! and the new Keysight MXE EMI receiver offer EMC labs a flexible, integrated solution that allows you to ensure the compliance of your products to international standards such as CISPR both today and tomorrow.

System Components

Keysight Technologies

| | |
|--------|------------------|
| N9038A | MXE EMI receiver |
|--------|------------------|

ETS-Lindgren

| | |
|-------|-------------------------------------------|
| TILE! | Total Integrated Lab Environment Software |
|-------|-------------------------------------------|

To learn how this solution can address your specific needs please contact Keysight's solutions partner, ETS-Lindgren
www.keysight.com/find/ets-l



Keysight & Solutions Partners
Extending our solutions to meet your needs

Keysight and its Solutions Partners work together to help customers meet their unique challenges, in design, manufacturing, installation or support. To learn more about the program, our partners and solutions go to

www.keysight.com/find/solutionspartner

For more information about TILE! and the other products and services available from ETS-Lindgren, please contact:

www.ets-lindgren.com

For information on Keysight Technologies' products, applications and services, go to

www.keysight.com

© Keysight Technologies, 2011-2014
Published in USA, August 1, 2014
5990-7682EN