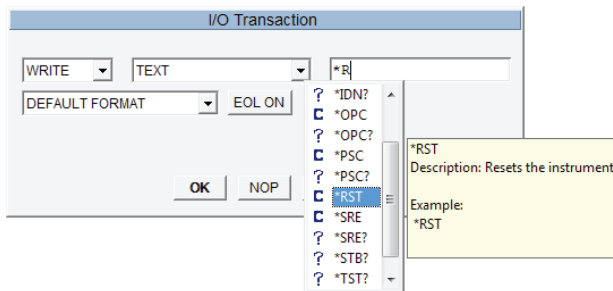




Introducing Keysight VEE

Keysight Technologies, Inc. software products make you more productive, so you can focus on solving engineering problems, not on programming. Keysight VEE is a powerful intuitive graphical language environment that provides a quick and easy path to measurement analysis.



Program faster with the SCPI completion feature

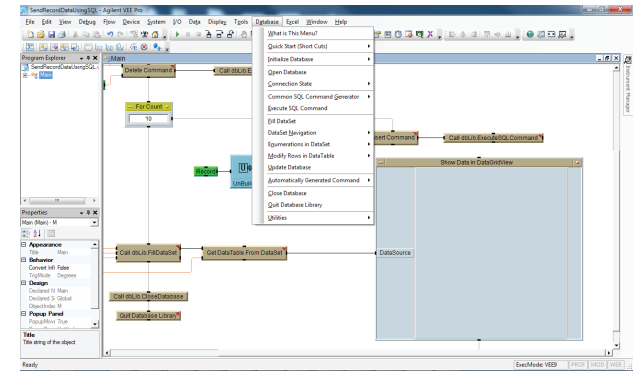
Advantages

- Easy-to-use graphical test and measurement software, allowing users to focus on measurement tasks rather than programming
- Quick and easy automation to Keysight and non-Keysight instruments
- Flowchart-like programming reduces test development time
- Quick reporting with Microsoft Excel 2013 support
- Advanced analysis functions with MATLAB 2007
- Quick access to commercial databases for data management

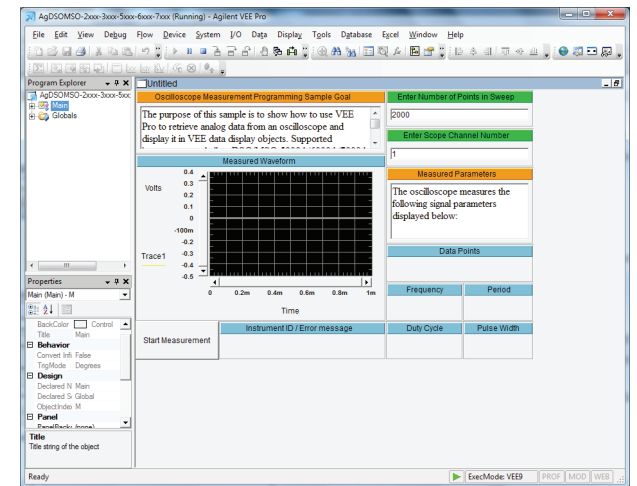
Key features

- New sample programs for Keysight 33500 series function/arbitrary waveform generator, 34411A digital multimeter and DSO/MSO oscilloscopes
- General vTools and USB Modular DAQ vTools*
- Microsoft Windows 8 compatibility
- Multithreading for improved execution time
- Multi-core programming for increased performance
- SCPI completion for faster programming
- Conditional breakpoints for enhanced debugging
- Breakpoints window for debug exploration and control
- Integrated support for LXI instruments' Web interface
- Private UserFunction for better program deployment management.

* The vTools can be downloaded for free at www.keysight.com/find/vee_download



Connect easily to commercial databases



Automate your instrument easily with measurement programming samples

Minimum system requirements for Keysight VEE Pro 9.32

Hardware requirements	
Processor	Windows XP: 450 MHz Pentium II or higher Windows Vista/Windows 7/Windows 8: 1 GHz Pentium III or higher
Operating system	One of the following Microsoft Windows versions: - Windows XP (Service Pack 3 or higher) - Windows Vista Business, Ultimate or Enterprise edition (Service Pack 1 or higher) - Windows 7 Professional, Ultimate or Enterprise edition - Windows 8 Professional or Enterprise edition Please note that 64-bit Windows 8 support is only available by running 32-bit application on a Windows-on-Windows emulator
RAM	Windows XP: 128 MB or higher Windows Vista/Windows 7/Windows 8: 1 GB or higher
Hard disk space	700 MB
Video	Windows XP: Super VGA (800 x 600) or higher resolution, 256 colors or more Windows Vista/Windows 7/Windows 8: Support for DirectX 9 graphics with 128 MB graphics memory recommended; Super VGA graphics supported
PC requirements	Keyboard, 2-button mouse and CD-ROM drive (if installing from CD)
Software requirements	
	Windows XP: Microsoft Internet Explorer 6.0 or higher Windows Vista/Windows 7/Windows 8: Microsoft Internet Explorer 7 or higher
	Microsoft Office 2003, 2007, 2010 and 2013 (if using Office products with Keysight VEE Pro)
	Keysight IO Libraries Suite 16.3.16603.3 or higher (if communicating with instruments using Keysight VEE)
	Microsoft .NET Framework 3.5 SP1

Minimum system requirements for Keysight VEE Pro 9.32 (continued)

Connectivity options for instrumentation
Keysight 82350B PCI-GPIB interface
Keysight 82351A PCIe/GPIB interface
Keysight 82357B USB/GPIB interface
Keysight E5810A LAN/GPIB gateway
Keysight E5810B LAN/GPIB/USB interface
USB connectivity to instruments supporting the USBTMC protocol
Standard RS-232
LAN connectivity to instruments supporting the VXI-11 protocol
National Instruments I/O hardware using NI 488 version 1.5 (or higher)
National Instruments I/O hardware using NI VISA version 3.0 (or higher)



For additional ordering information, technical policy, part numbers and pricing assistance, please refer to: www.keysight.com/find/vee.

Ordering information

Core product	Notes
Keysight VEE Pro 9.32 Software (W4000D-1TP)	Includes the full feature of Keysight VEE Pro 9.32 CD Quick Start Guide (6 languages)
Keysight VEE Pro 9.32 Student Software (W4000D-2TP) (for students only)	Includes the full feature of Keysight VEE Student 9.32 CD and Quick Start Guide (6 languages)
Keysight VEE Pro Education 9.32 (W4000D-3TP) (for education customers only)	Includes 10 licenses of Keysight VEE Pro 9.32 and and Quick Start Guide (6 languages)
Upgrade licenses	Notes
Upgrade from Keysight VEE Pro 8.5 to Keysight VEE Pro 9.32 (W4000D-5TP)	Includes CD and Quick Start Guide (6 languages)
Upgrade from Keysight VEE Pro 8.0 to Keysight VEE Pro 9.32 (W4000D-6TP)	Includes CD and Quick Start Guide (6 languages)
Upgrade from Keysight VEE Pro 7.5 & below to Keysight VEE Pro 9.32 (W4000D-7TP)	Includes CD and Quick Start Guide (6 languages)
Upgrade from Keysight VEE Express to Keysight VEE Pro 9.32 (W4000D-8TP)	Includes CD and Quick Start Guide (6 languages)
Additional options	Notes
Keysight VEE Education 9.32 10-license option (W4000D-4TP)	Includes Software Entitlement Certificate to add on 10 licenses to VEE Education 9.32 (W4000D-3TP)
*No Documentation/Education Package (W4000D-0B0)	Includes Software Entitlement Certificate only/ Basic Education package only (default for W4000D-2TP and W4000D-4TP)

Keysight VEE 9.32 does not come with an express version.