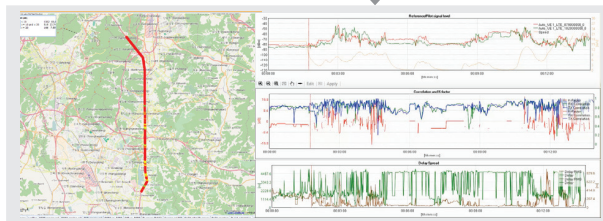
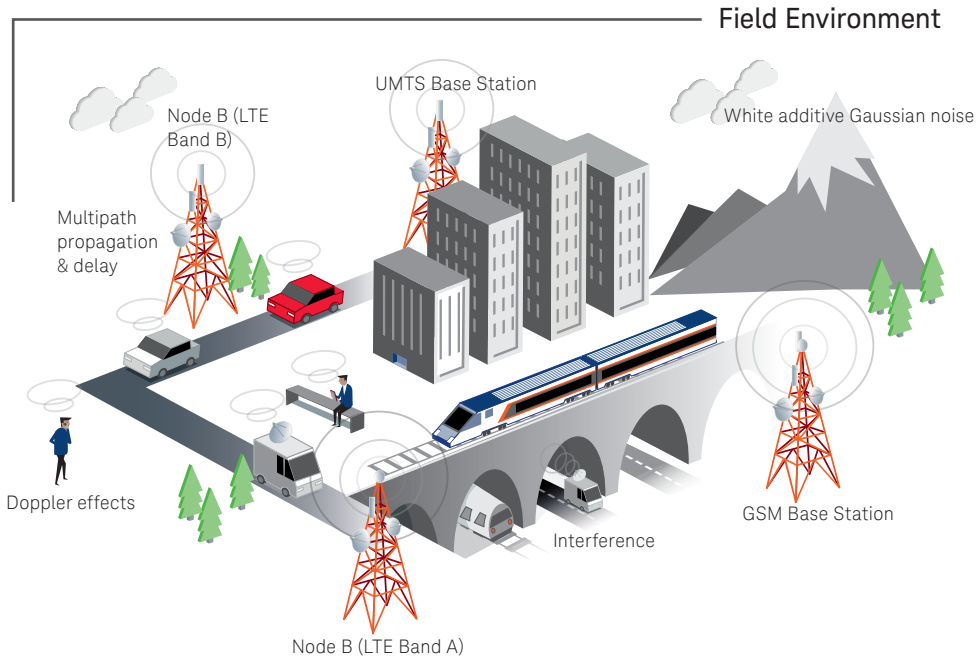


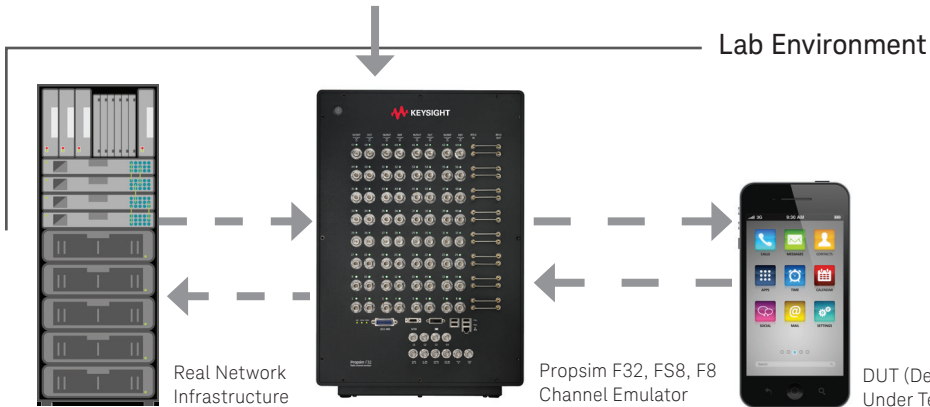
# Keysight Technologies

## Propsim Channel Emulator Simulates Characteristics of Real-World Radio Channel Conditions within a Lab Environment



### Real world wireless propagation in laboratory with PropSim

- Pathloss & shadowing
- Multipath propagation
- Doppler
- MIMO correlation



### Object Interference

Objects such as buildings, trees, vehicles, tunnels and people cause interactions that affect the radio signals in terms of:

- Amplitude
- Phase
- Frequency
- Angle of arrival

### Versatile Channel Emulation solution, easy-to-use in a wide range of applications

- MIMO & Beamforming
- WLAN
- Aerospace
- MANET
- MIMO OTA

### Lab Environment

RF fading emulator enables realistic real-time propagation channel emulation and offers:

- The highest number of RF interface channels and internal digital channels
- Integrated, synchronous and programmable interference sources with fading
- The best channel linearity
- The widest RF signal dynamic range
- The highest number of interface channels

Anite is now part of Keysight Technologies