

Keysight Technologies

Solving Design and Test Challenges for Medical Devices

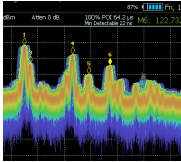
Wearable monitors, medical imaging, active implants, hearing systems

RF/Wireless Test

Non-RF/Wireless Test

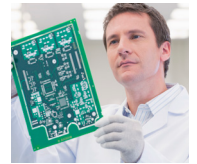
Interference and Coexistence

- EMI, EMC, Pre-compliance measurement



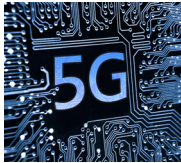
Electronic and Electrical Test

- Most medical devices operates at:
 - Low voltage
 - Low current
 - Low frequency



NFC, Bluetooth®, ZigBee®, WLAN

- Various wireless technologies in medical devices to provide always-on patient monitoring
- Seamless communication (P2M and M2M) and wireless sensing



Power Consumption Test for Battery Operated Devices

- Extremely wide dynamic range between active and idling
- Rapid current level change



MRI Imaging Component Test

- RF coil test, gradient coil test, power supply source, amplifier test, pre-amplifier test, RF signal source test



High Speed Imaging

- Fast data acquisition for sound and image quality
- Fast image reconstruction



See our growing range of solutions at www.keysight.com/find/medical

Bluetooth® and the Bluetooth® logos are registered trademarks owned by Bluetooth SIG, Inc., and any use of such marks by Keysight Technologies is under license.

This information is subject to change without notice.
© Keysight Technologies, 2017
Published in USA, December 7, 2017
5992-2694EN
www.keysight.com